

## Demographic indicators

Estimates for the year 2018

On 1<sup>st</sup> January 2019, the population was estimated to be 60,391,000 and the decrease on the previous year was around 90,000 units (-1.5 per thousand).

The population of Italian citizenship dropped to 55 million 157 thousand (-3.3 per thousand). Non nationals at 1<sup>st</sup> January 2019 were 5 million 234 thousand (+17.4 per thousand; 8.7% of the total population).

The number of live births dropped to 449 thousand (9 thousand less than in 2017), reaching a new minimum level. Compared with 2008, there were 128 thousand live births less.

The number of deaths was 636 thousand, 13 thousand less than in 2017. In 2018, in relative terms 10.5 individuals died per thousand inhabitants (10.7 in 2017), and the natural balance was the second lowest ever (-187 thousand; -191 thousand in 2017).

The net international migration amounted to +190 thousand, recording a slight increase on the previous year (+188 thousand). Both immigration (349 thousand) and emigration (160 thousand) increased (+1.7% and +3.1% respectively).

Out of 349 thousand registrations from abroad, 302 thousand concerned individuals of foreign nationality, the highest level in the last six years. Only 40 thousand cancellations to abroad on overall 160 thousand in 2018 were due to non-national citizens.

Among Italians, departures continued to be more consistent than returns. More in detail, there were 120 thousand emigrations against just 47 thousand repatriations.

The total fertility rate was unchanged from the previous year (1.32 children per woman) and the mean age at childbearing reached for the first time 32 years, confirming the trend towards children at later ages.

According to cohort fertility indicators, the propensity to have less children decreased regularly from 2.16 to 1.53 children among women born in 1940 and in 1968 respectively.

In 2018 there was a new increase in life expectancy at birth compared with the previous year, 80.8 years for men (+0.2) and 85.2 years for women (+0.3). At 65 years of age, the residual life expectancy amounted to 19.3 years for men (+0.3) and 22.4 years for women (+0.2).

The changes of residence within the national borders were above 1 million 359 thousand (+1.8%). Among them, the interregional movements were 330 thousand (24.3% of total transfers).

Positive internal migratory balances were recorded in the North-East regions (+2.2 per thousand inhabitants) and, to a lesser extent, in those of the North-West (+1.2). In Southern Italy, the balances were negative everywhere and the net loss of the population was 65 thousand individuals (58% from Campania and Sicily).

At 1<sup>st</sup> January 2019 the growth of the elderly population continued both in absolute and relative terms: the over-65s were 13.8 million (22.8% of the total population), whereas young people up to the age of 14 were about 8 million (13.2%) and individuals in working age 38.6 million (64%).

FIGURE 1. POPULATION GROWTH RATE, BY REGION. Year 2018, estimate, per thousand inhabitants

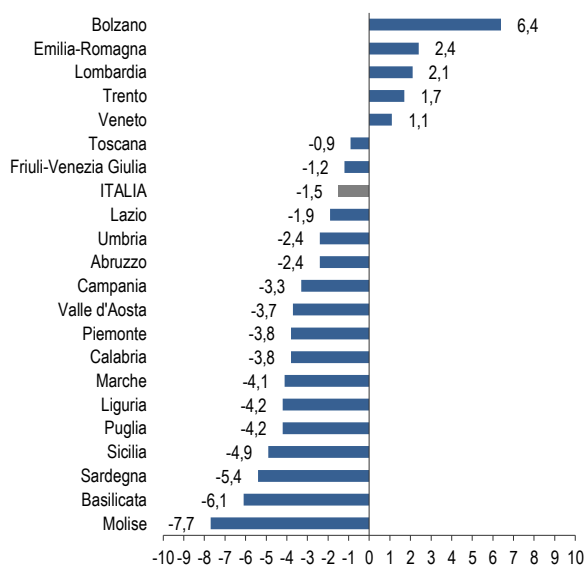
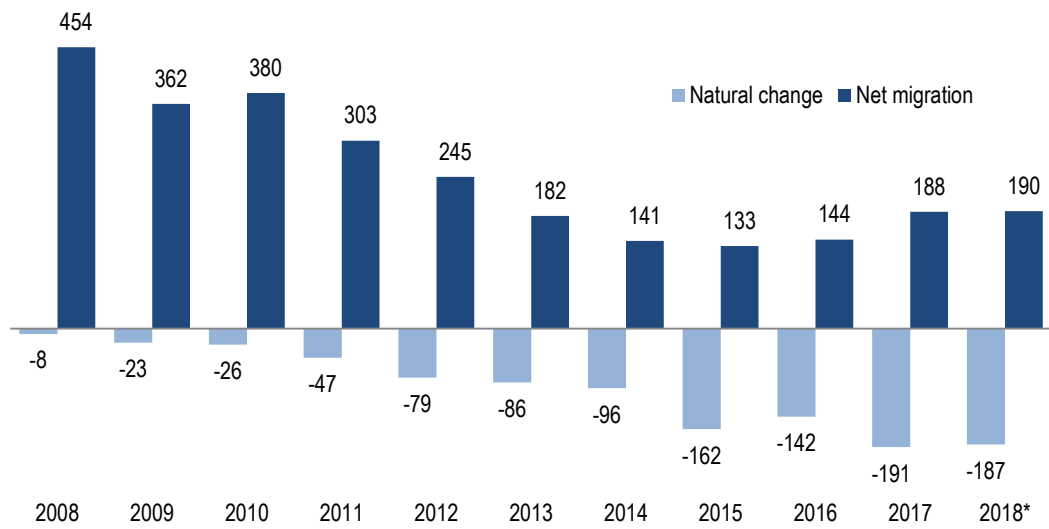


TABLE 1. MAIN COMPONENTS OF THE POPULATION CHANGE. Year 2018, thousand, estimates

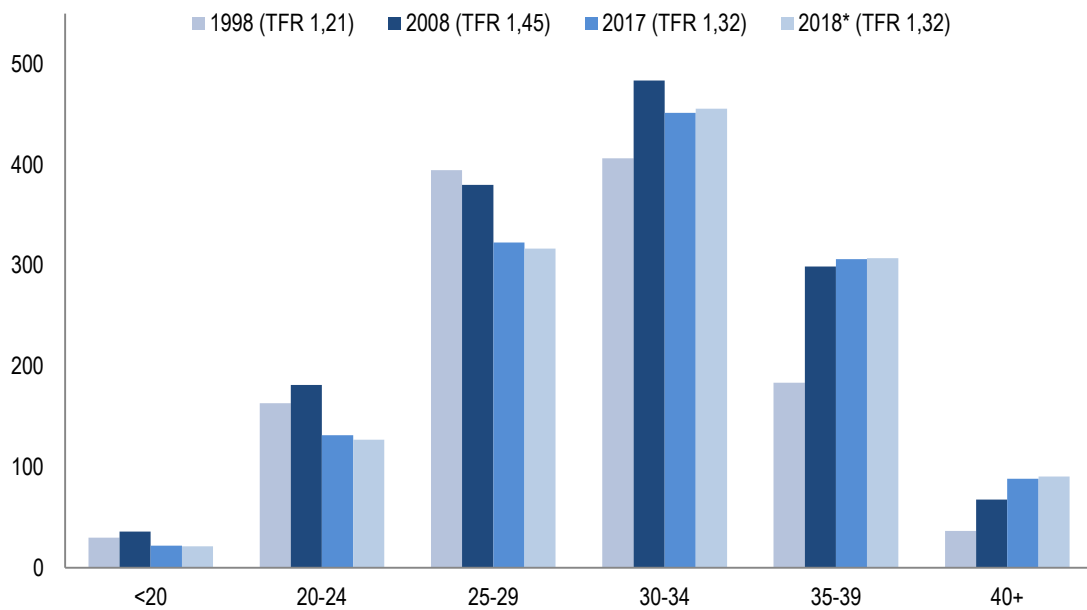
| Regions / Geographic Area | Population at start | Natural increase | Net international migration | Net internal migration | Net other reasons | Population at end |
|---------------------------|---------------------|------------------|-----------------------------|------------------------|-------------------|-------------------|
| Piemonte                  | 4,375.9             | -24.9            | 12.2                        | 4.2                    | -8.0              | 4,359.3           |
| Valle d'Aosta             | 126.2               | -0.6             | 0.3                         | 0.0                    | -0.2              | 125.7             |
| Lombardia                 | 10,036.3            | -22.1            | 38.7                        | 12.7                   | -8.0              | 10,057.5          |
| Trentino-Alto Adige       | 1,067.6             | 0.4              | 2.3                         | 3.3                    | -1.7              | 1,072.0           |
| <i>Bolzano-Bozen</i>      | 527.8               | 0.9              | 1.2                         | 1.8                    | -0.6              | 531.1             |
| <i>Trento</i>             | 539.9               | -0.5             | 1.1                         | 1.4                    | -1.1              | 540.8             |
| Veneto                    | 4,905.0             | -12.8            | 17.8                        | 5.9                    | -5.5              | 4,910.4           |
| Friuli-Venezia Giulia     | 1,215.5             | -6.7             | 4.6                         | 2.8                    | -2.2              | 1,214.1           |
| Liguria                   | 1,557.0             | -13.1            | 5.9                         | 2.3                    | -1.6              | 1,550.4           |
| Emilia-Romagna            | 4,452.6             | -17.2            | 19.5                        | 14.0                   | -5.7              | 4,463.2           |
| Toscana                   | 3,737.0             | -18.2            | 15.5                        | 2.8                    | -3.7              | 3,733.4           |
| Umbria                    | 884.6               | -4.2             | 2.7                         | 0.0                    | -0.6              | 882.5             |
| Marche                    | 1,531.8             | -6.8             | 4.0                         | -0.4                   | -3.1              | 1,525.5           |
| Lazio                     | 5,896.7             | -14.8            | 19.7                        | -0.2                   | -16.0             | 5,885.4           |
| Abruzzo                   | 1,315.2             | -5.6             | 4.7                         | -0.7                   | -1.6              | 1,312.0           |
| Molise                    | 308.5               | -1.8             | 1.7                         | -1.2                   | -1.1              | 306.1             |
| Campania                  | 5,826.9             | -4.7             | 13.0                        | -21.2                  | -6.1              | 5,807.8           |
| Puglia                    | 4,048.2             | -9.4             | 7.9                         | -11.3                  | -4.3              | 4,031.2           |
| Basilicata                | 567.1               | -2.4             | 1.8                         | -2.3                   | -0.6              | 563.7             |
| Calabria                  | 1,956.7             | -4.5             | 8.0                         | -8.6                   | -2.4              | 1,949.3           |
| Sicilia                   | 5,027.0             | -10.6            | 6.9                         | -16.4                  | -4.4              | 5,002.5           |
| Sardegna                  | 1,648.2             | -6.8             | 2.4                         | -3.4                   | -1.1              | 1,639.3           |
| <b>Italy</b>              | <b>60,484.0</b>     | <b>-186.7</b>    | <b>189.5</b>                | <b>-17.8</b>           | <b>-77.7</b>      | <b>60,391.3</b>   |
| <b>North</b>              | <b>27,736.2</b>     | <b>-97.0</b>     | <b>101.2</b>                | <b>45.2</b>            | <b>-32.9</b>      | <b>27,752.6</b>   |
| <i>North-west</i>         | <i>16,095.3</i>     | <i>-60.7</i>     | <i>57.1</i>                 | <i>19.2</i>            | <i>-17.9</i>      | <i>16,092.9</i>   |
| <i>North-east</i>         | <i>11,640.9</i>     | <i>-36.3</i>     | <i>44.2</i>                 | <i>26.0</i>            | <i>-15.0</i>      | <i>11,659.7</i>   |
| <b>Centre</b>             | <b>12,050.1</b>     | <b>-43.9</b>     | <b>41.9</b>                 | <b>2.2</b>             | <b>-23.3</b>      | <b>12,026.8</b>   |
| <b>South and Islands</b>  | <b>20,697.8</b>     | <b>-45.7</b>     | <b>46.4</b>                 | <b>-65.2</b>           | <b>-21.5</b>      | <b>20,611.9</b>   |
| <i>South</i>              | <i>14,022.6</i>     | <i>-28.3</i>     | <i>37.2</i>                 | <i>-45.4</i>           | <i>-16.0</i>      | <i>13,970.1</i>   |
| <i>Islands</i>            | <i>6,675.2</i>      | <i>-17.4</i>     | <i>9.2</i>                  | <i>-19.8</i>           | <i>-5.4</i>       | <i>6,641.7</i>    |

**FIGURE 2. NATURAL CHANGE AND NET INTERNATIONAL MIGRATION – ITALY.** Years 2008-2018, thousand



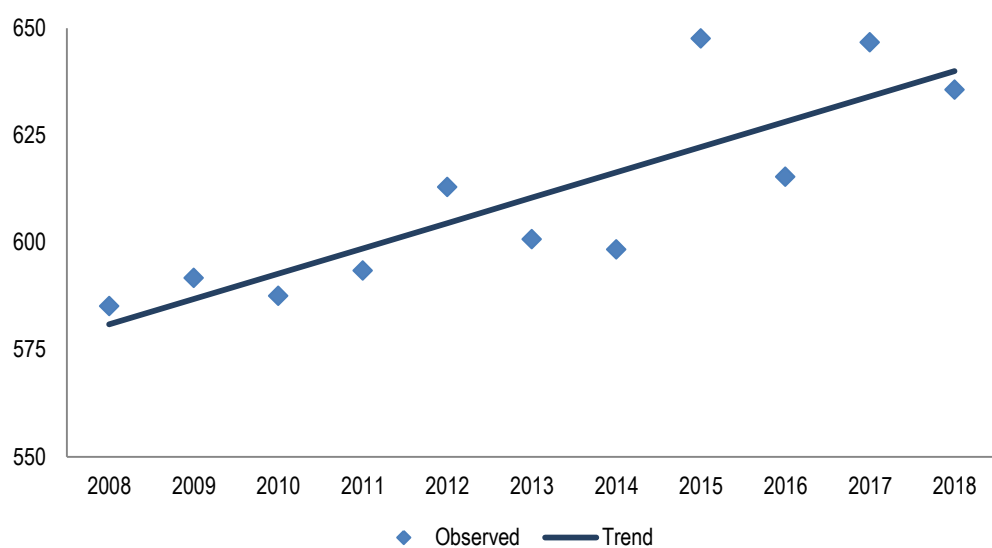
(\*) 2018 estimate.

**FIGURE 3. CUMULATED FERTILITY RATES BY AGE GROUP OF THE MOTHER – ITALY**  
Years 1998, 2008, 2017 and 2018\*, per thousand



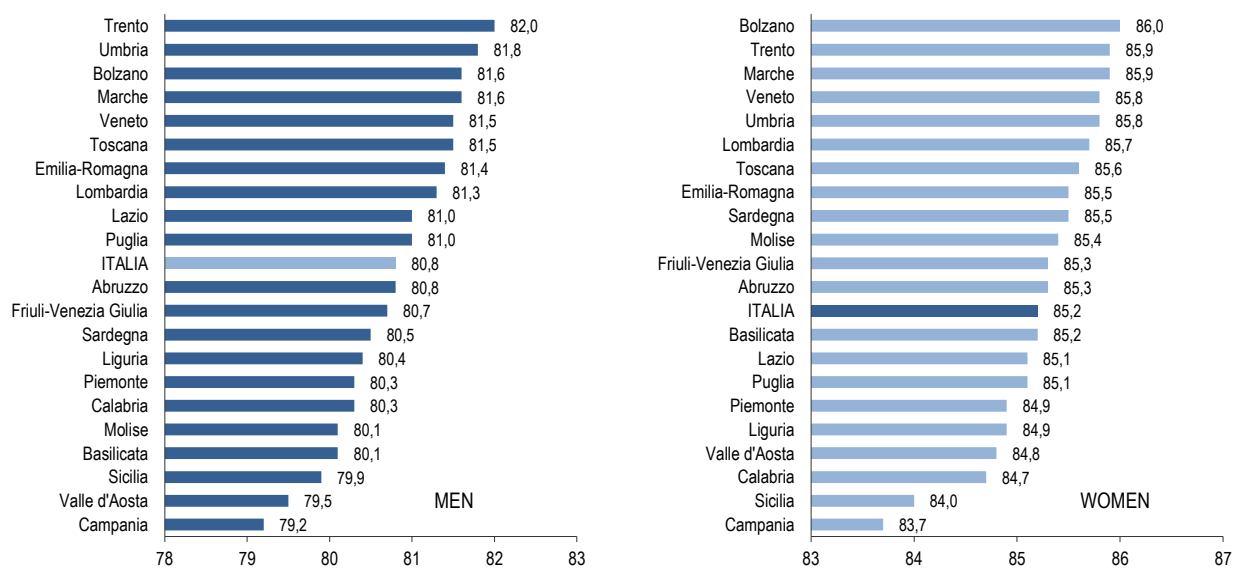
(\*) 2018 estimate.

FIGURE 4. REGISTERED AND EXPECTED DEATHS – ITALY . Years 2008-2018\*, thousand



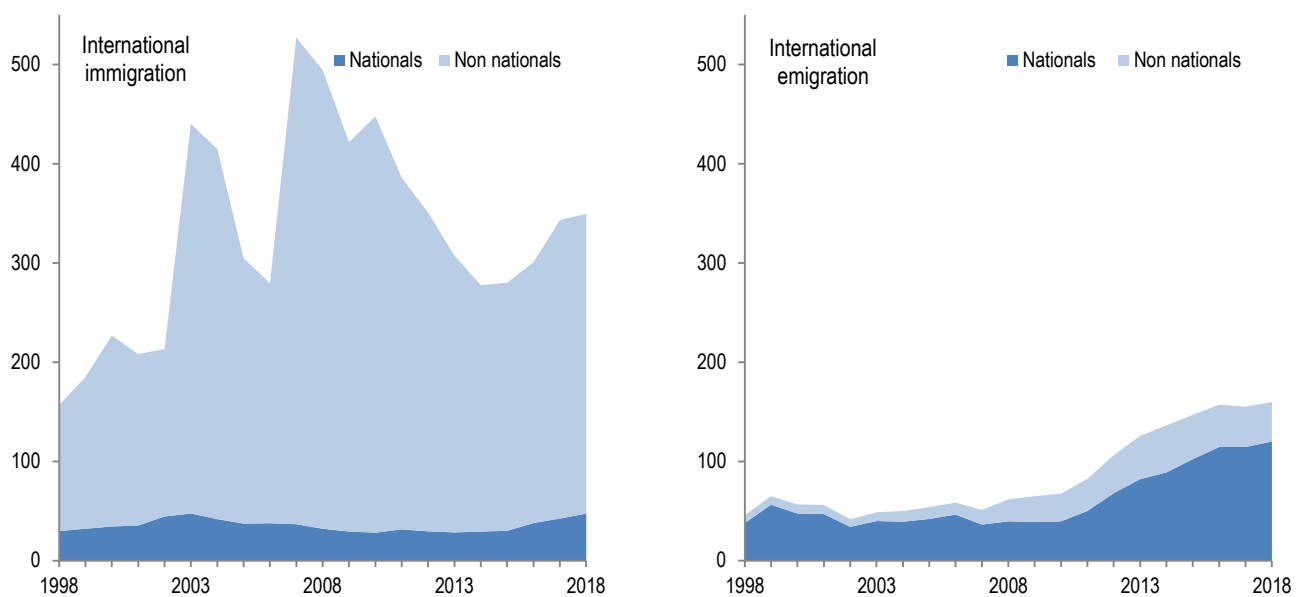
(\*) 2018 estimate.

FIGURE 5. LIFE EXPECTANCY AT BIRTH BY SEX AND REGION – ITALY. Year 2018\*



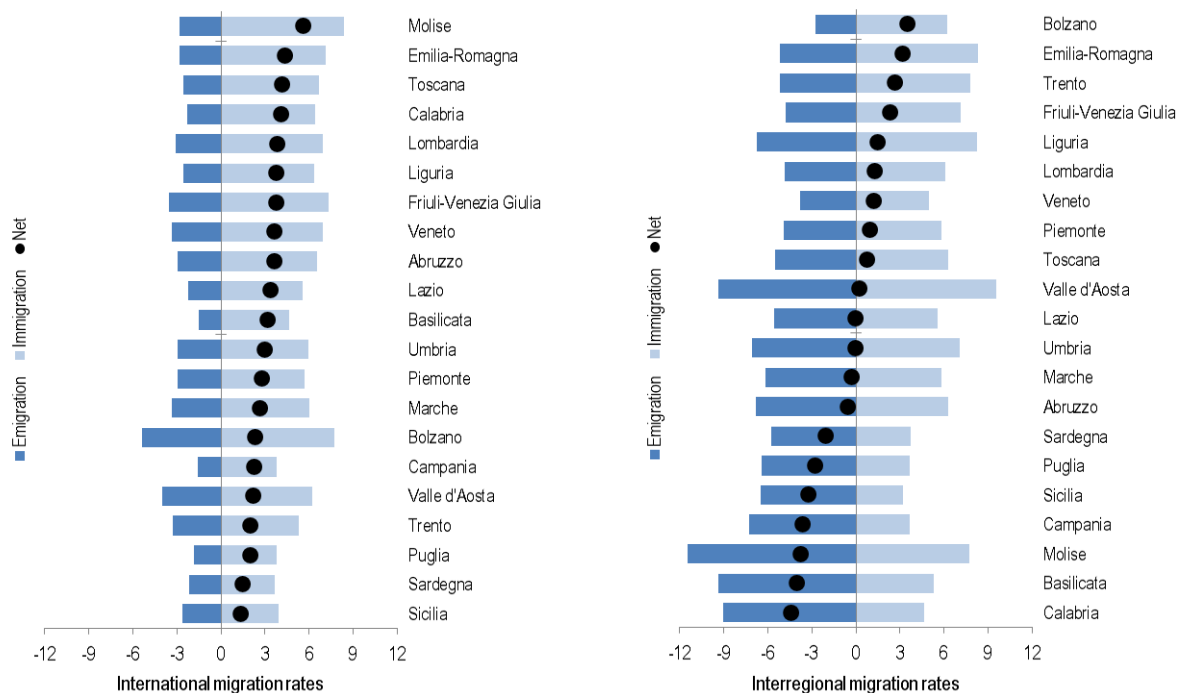
(\*) 2018 estimate.

FIGURE 6. INTERNATIONAL IMMIGRATION AND EMIGRATION BY MAIN CITIZENSHIP – ITALY. Years 1998-2018\*, thousand



(\*) 2018 estimate.

FIGURE 7. INTERNATIONAL AND INTERREGIONAL MIGRATION RATES, BY REGION – ITALY  
Year 2018\*, per thousand inhabitants



(\*) Estimate.

**TABLE 2. MAIN INDICATORS OF THE POPULATION AGEING – ITALY. Years 2009-2019\*, January 1<sup>st</sup>**

| INDICATOR                               | 2009  | 2010  | 2011  | 2012  | 2013  | 2014  | 2015  | 2016  | 2017  | 2018  | 2019  |
|---|-------|-------|-------|-------|-------|-------|-------|-------|-------|-------|-------|
| Population aged 0-14 (%)                | 14,1  | 14,1  | 14,1  | 14,0  | 14,0  | 13,9  | 13,8  | 13,7  | 13,5  | 13,4  | 13,2  |
| Population aged 15-64 (%)               | 65,6  | 65,5  | 65,4  | 65,2  | 64,8  | 64,7  | 64,5  | 64,3  | 64,2  | 64,1  | 64,0  |
| <i>Population aged 15-39 (%)</i>        | 31,0  | 30,5  | 29,9  | 29,6  | 29,0  | 28,6  | 28,1  | 27,7  | 27,3  | 27,0  | 26,8  |
| <i>Population aged 40-64 (%)</i>        | 34,6  | 35,0  | 35,5  | 35,6  | 35,8  | 36,1  | 36,3  | 36,6  | 36,9  | 37,1  | 37,2  |
| Population aged 65 and above (%)        | 20,3  | 20,4  | 20,5  | 20,8  | 21,2  | 21,4  | 21,7  | 22,0  | 22,3  | 22,6  | 22,8  |
| <i>Population aged 65-84 (%)</i>        | 17,8  | 17,8  | 17,8  | 17,9  | 18,2  | 18,3  | 18,6  | 18,8  | 18,9  | 19,1  | 19,2  |
| <i>Population aged 85 and above (%)</i> | 2,5   | 2,6   | 2,7   | 2,9   | 3,0   | 3,1   | 3,2   | 3,3   | 3,4   | 3,5   | 3,6   |
| Dependency ratio (100)                  | 52,4  | 52,7  | 52,8  | 53,5  | 54,2  | 54,6  | 55,1  | 55,5  | 55,8  | 56,0  | 56,3  |
| Old age dependency ratio (100)          | 30,9  | 31,2  | 31,3  | 32,0  | 32,7  | 33,1  | 33,7  | 34,3  | 34,8  | 35,2  | 35,6  |
| Ageing index (100)                      | 144,1 | 144,8 | 145,7 | 148,6 | 151,4 | 154,1 | 157,7 | 161,4 | 165,3 | 168,9 | 172,9 |
| Living centenarians (thousand)          | 11,3  | 12,2  | 13,5  | 15,0  | 16,4  | 17,9  | 19,1  | 18,8  | 17,6  | 15,6  | 14,1  |
| Mean age (years)                        | 43,2  | 43,4  | 43,6  | 43,8  | 44,0  | 44,2  | 44,4  | 44,7  | 44,9  | 45,2  | 45,4  |
| Population (million)                    | 59,0  | 59,2  | 59,4  | 59,4  | 59,7  | 60,8  | 60,8  | 60,7  | 60,6  | 60,5  | 60,4  |

(\*) 2019 estimate.

## For more details please refer to the Italian version

Contact persons:

**Marco Marsili** ([marsili@istat.it](mailto:marsili@istat.it))

Phone: 0646732606

**Marco Battaglini** ([battaglini@istat.it](mailto:battaglini@istat.it))

Phone: 0646737341

Istat – National Institute of Statistics

Via Balbo, 16 – Rome 00184 Italy