



## Statistical Framework for measuring femicide

***Angela Me, Chief Research and trend analysis branch***

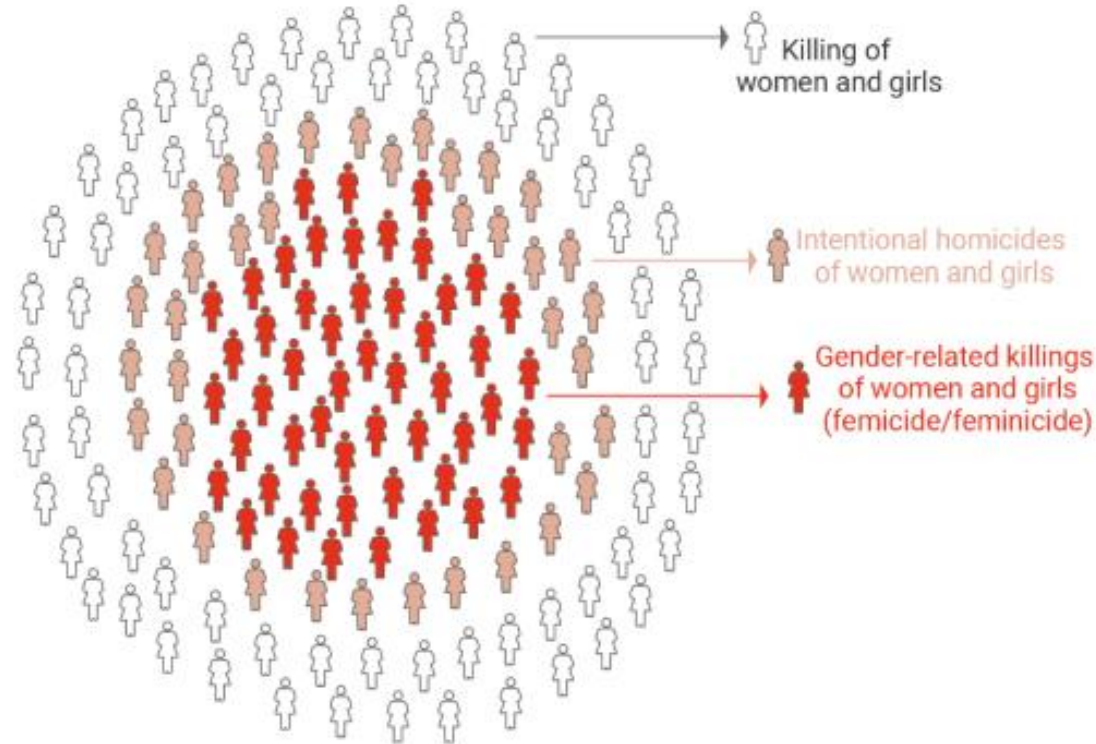
# Broad categories of killings of women and girls



Killings of women and girls = unnatural deaths of women and girls, inflicted by another person, with or without intent to cause death or serious injury.

Intentional homicides of women and girls = unlawful deaths inflicted upon women and girls with intent to cause death or serious injury

Gender-related killings of women and girls (femicide/ feminicide) = intentional homicides of women and girls with a gender-related motivation.





**The challenge is to measure the  
*gender-related motivation* in the  
killings of women and girls**

# Broad categories of killings of women and girls



Gender-related killings can occur within different perpetrator-victim **relationships**



# Global characteristics of gender-related motivations



Previous record of harassment/violence



Illegal deprivation of her liberty



Use of force and/or mutilation



Body disposed of in a public space



Hate crime



Sexual violence was committed before



Victim was working in the sex industry



Victim of forms of illegal exploitation

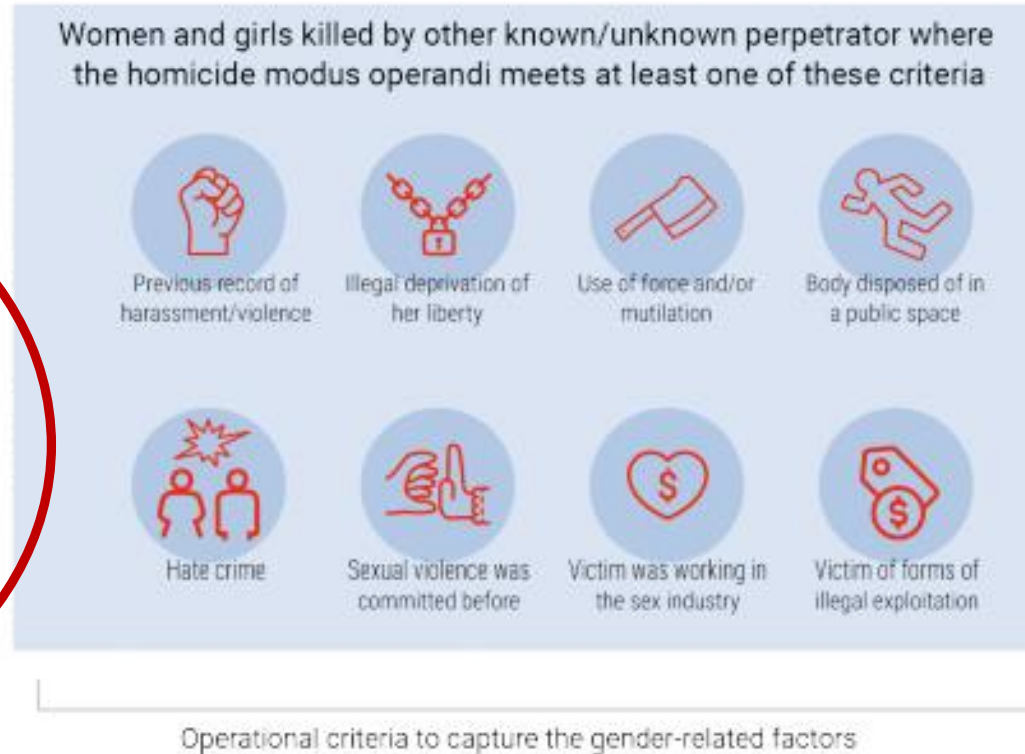
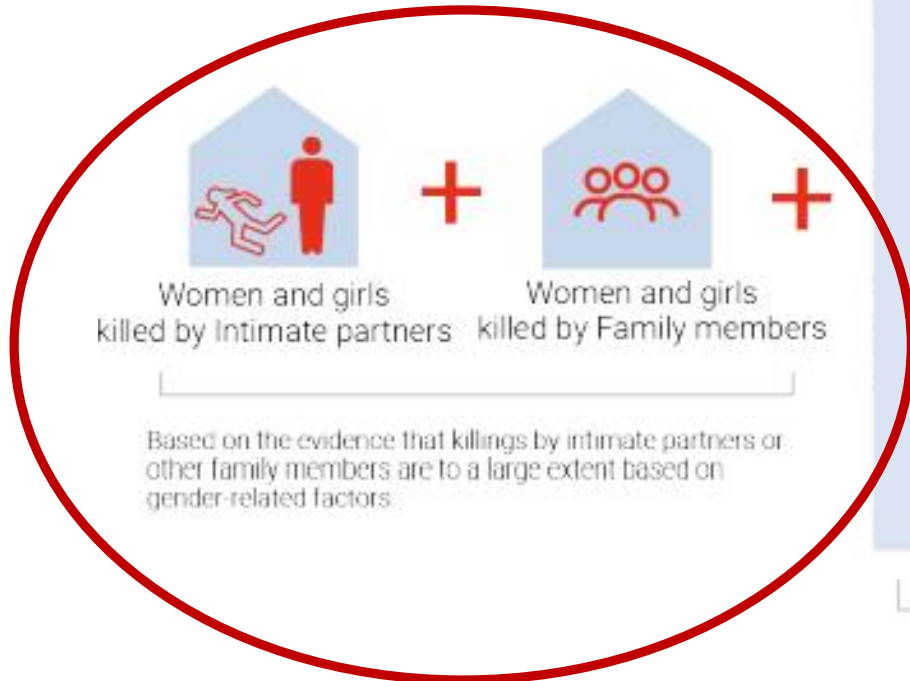


## What next?

- Raise awareness on the framework
- Make the framework our global tool: bring together different stakeholders
- Work with police and other institutions to refine the recording of homicide: make the victim/perpetrator relationship + global characteristics of the gender-motivation a **standard recording**
- Make other characteristics of homicide a standard recording:
  - Victim characteristics, perpetrator characteristics, event disaggregation



# Meanwhile....Data blocks for collecting and aggregating statistics on gender-related killings



# Gender dimension of homicide



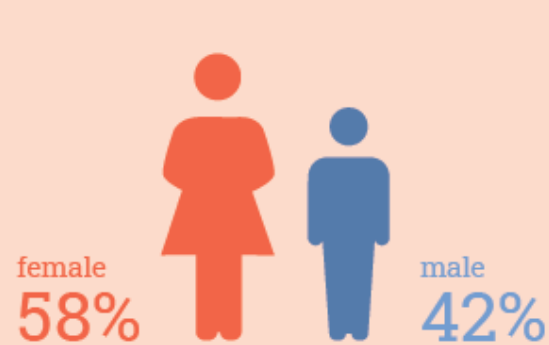
Total homicides  
2020



Non-Intimate partner/  
family-related homicides  
2020



Intimate partner/  
family-related homicides  
2020



**Homicides within the private sphere affect both sexes, but women and girls bear the largest burden of lethal violence perpetrated within the home**

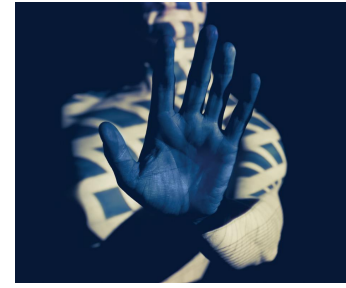


## Global picture in 2020

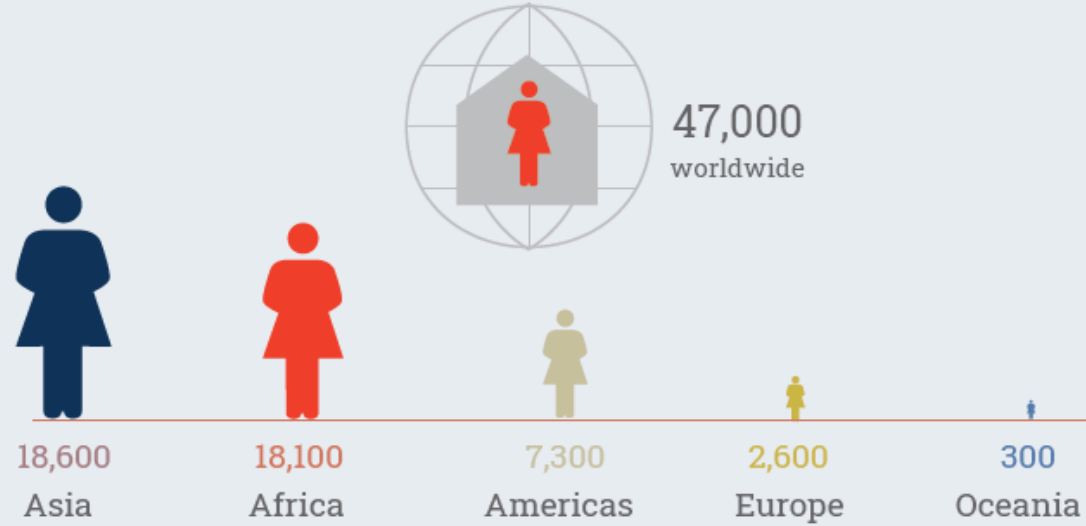


**On average, a woman or girl is killed by someone in her own family every 11 minutes.**

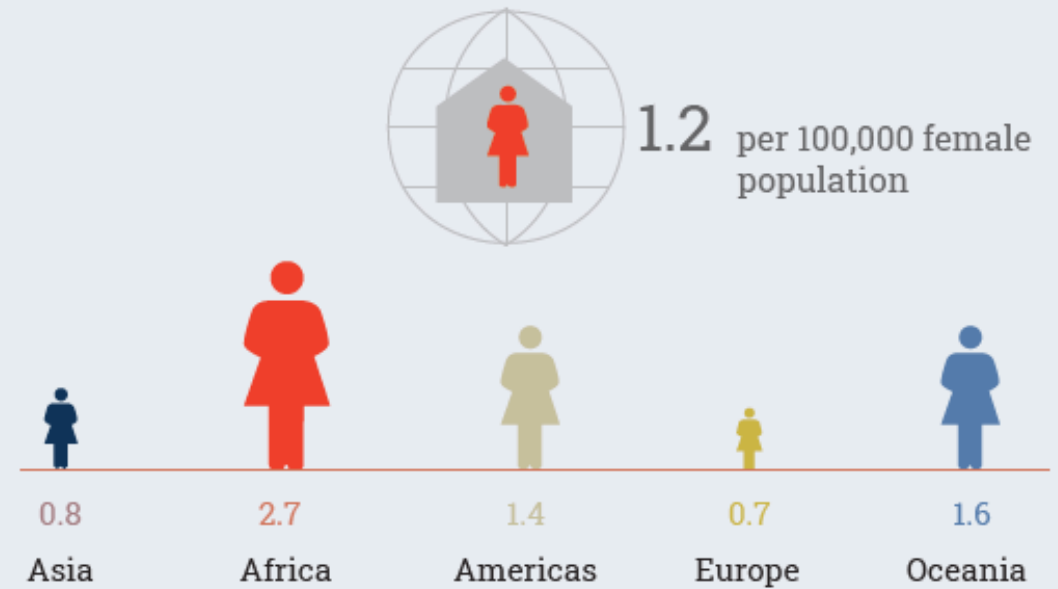
# Regional picture in 2020



Total female intimate partner/family-related homicides  
2020



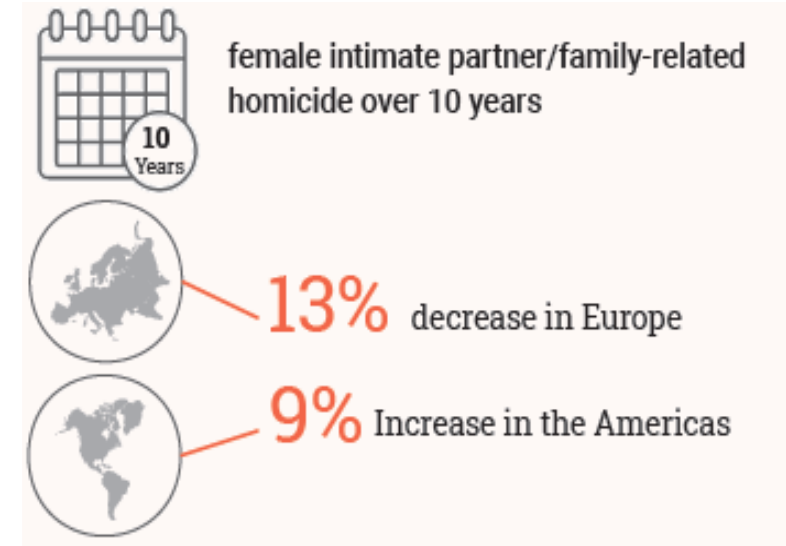
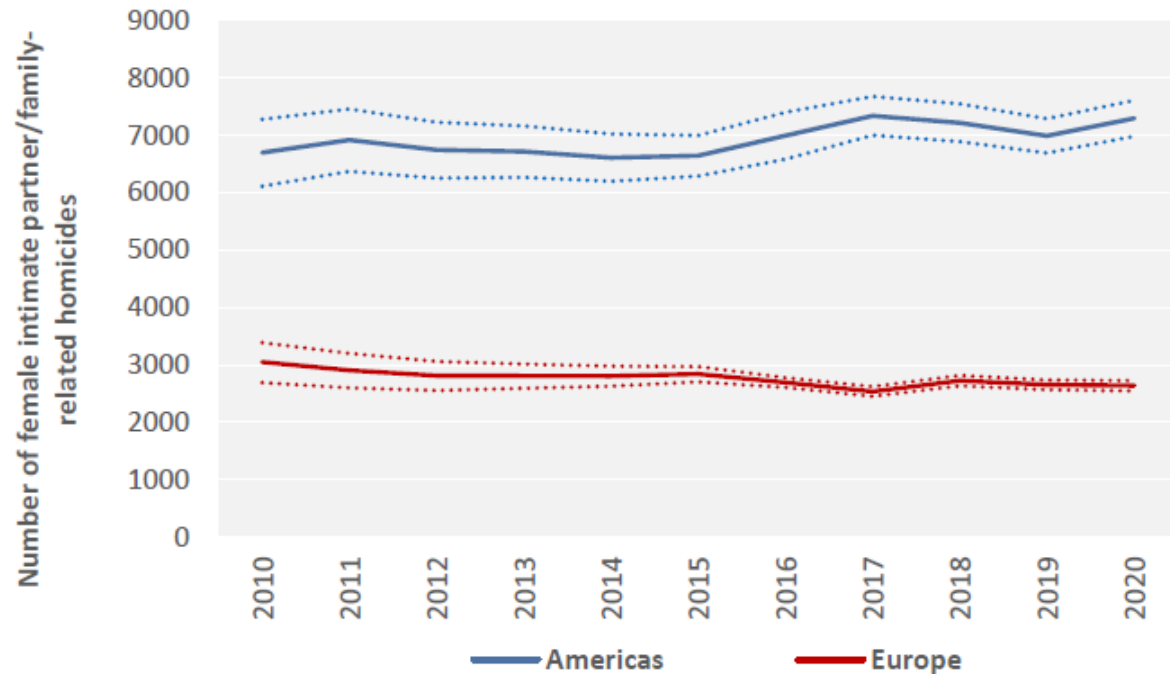
Rates of female intimate partner/family-related homicide per 100,000 female population  
2020





# Trends in female intimate partner/family related homicide

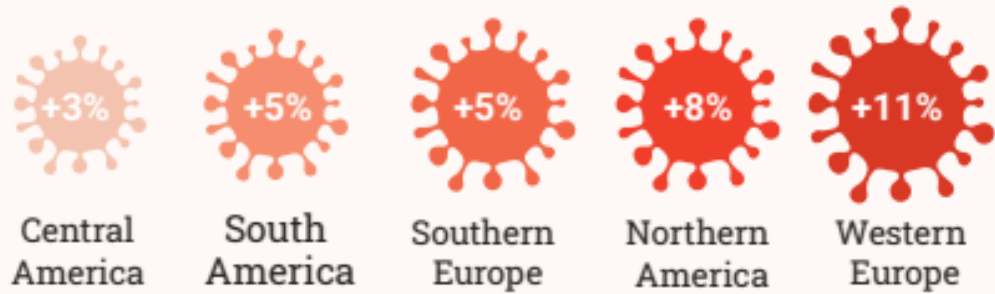
**Figure 2:** Trends in the total number of female victims of intimate partner/family-related homicide in the Americas and Europe (2010–2020)



Source: UNODC estimates based on UNODC Homicide dataset.



number of homicides of women and girls by intimate partners or other family members increased from 2019 to 2020 in almost all subregions where trends could be estimated



no change in Northern Europe and slight decrease in Eastern Europe

**Increase during  
Covid-19 pandemic?**

# Thank you!



Further information available at:

- [UNODC Data Matter 3: Killings of women and girls by their intimate partners and other family members, Global estimates 2020 \(2021\)](#)
- <https://www.unodc.org/unodc/en/data-and-analysis/index.html>
- <https://www.unodc.org/unodc/en/data-and-analysis/research-on-gender-drugs-and-crime.html>
- <https://www.unodc.org/unodc/en/data-and-analysis/coronavirus.html>
- UNODC Research Brief: [What crime and helpline data say about the impact of the Covid-19 pandemic on reported violence against women \(2020\)](#)
- [UNODC Global Study on Homicide 2019, Booklet on gender-related killing of women and girls \(2019\)](#)
- [ICCS Briefing Note: Measuring violence against women and other gender issues through ICCS lenses \(2017\)](#)
- [International classification of crime for statistical purposes \(Version 1.0\) \(2015\)](#)