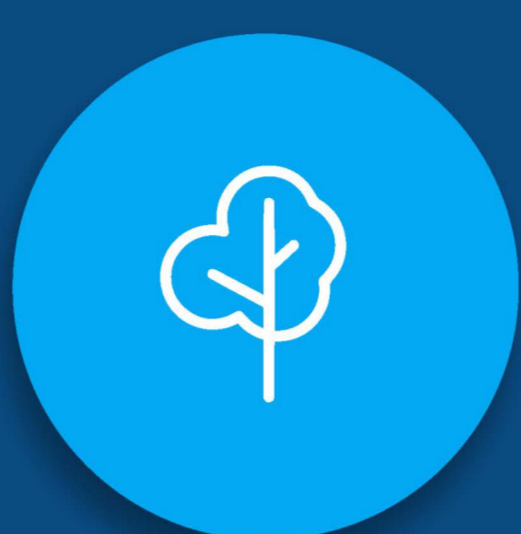


## BILANCI E GREEN PUBLIC PROCUREMENT

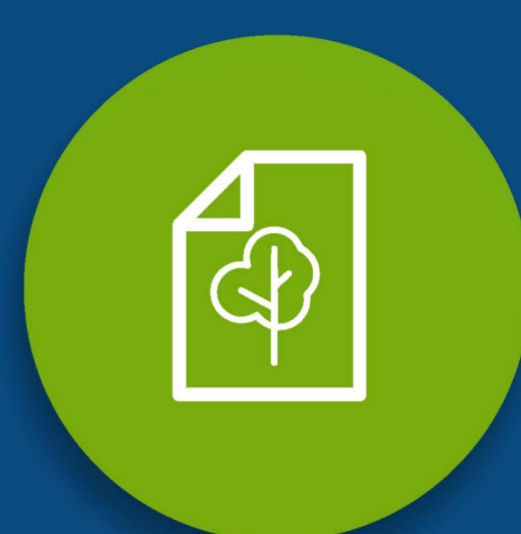
### 12.848 ISTITUZIONI PUBBLICHE



**12,9%**  
HANNO ADOTTATO  
IL BILANCIO SOCIALE



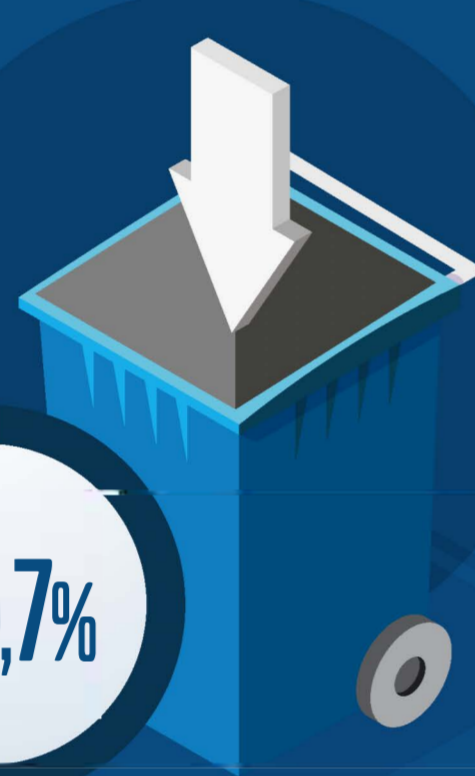
**16,1%**  
HANNO ADOTTATO  
ALMENO UNA FORMA DI  
RENDICONTAZIONE SOCIALE



**1,7%**  
HANNO UN  
REFERENTE GPP

## RACCOLTA DIFFERENZIATA

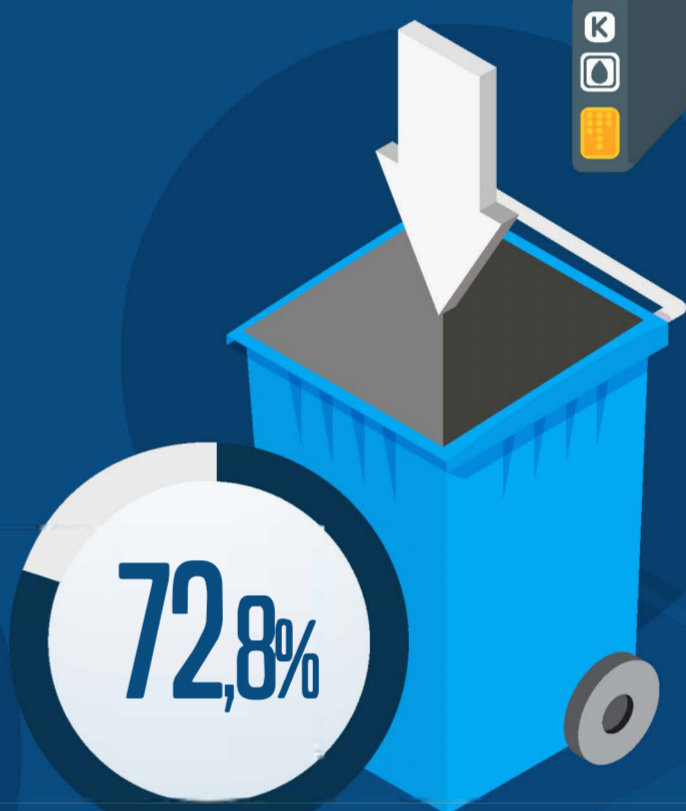
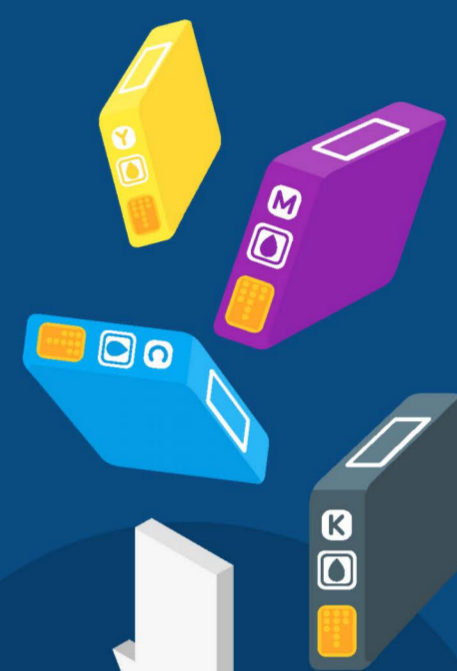
### 63.414 UNITÀ LOCALI CHE DIFFERENZIANO:



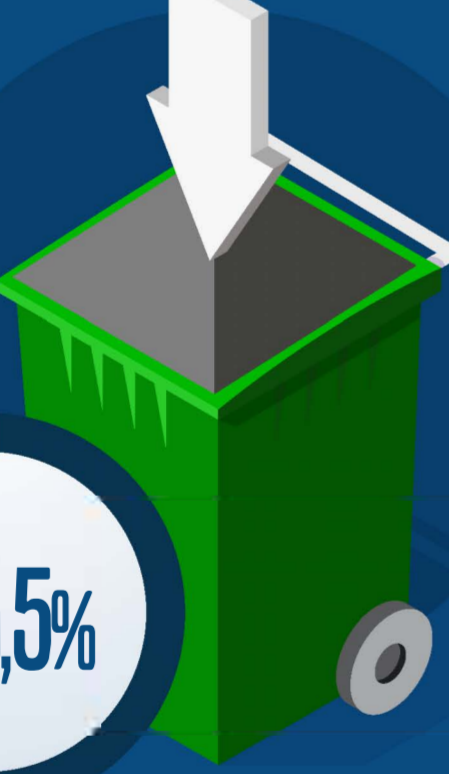
**CARTA**



**PLASTICA**



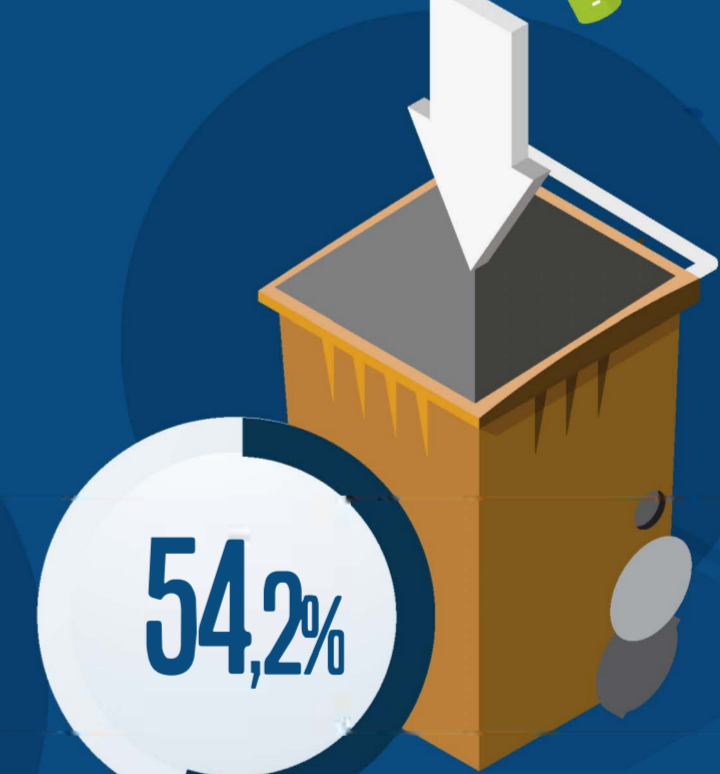
**TONER**



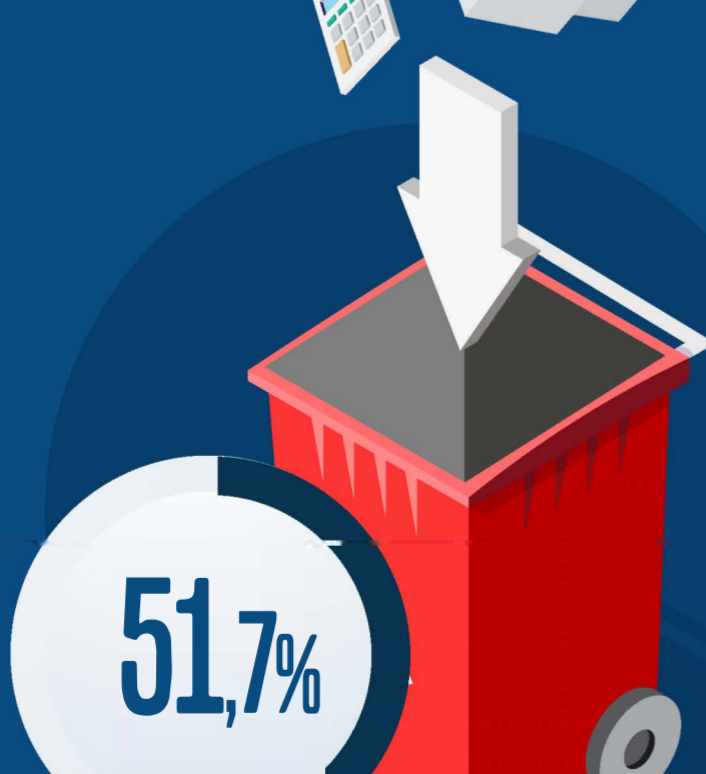
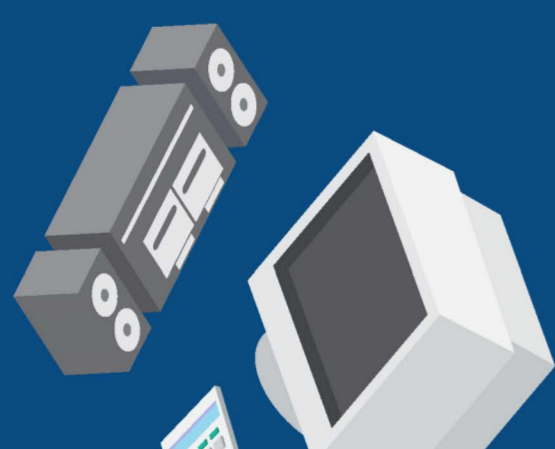
**VETRO**



**METALLI  
INCLUSO ALLUMINIO**



**PILE  
BATTERIE**



**RAEE\***



**ALTRO**

\*Rifiuti da apparecchiature elettriche ed elettroniche  
Non sono comprese le unità locali-scuole statali, acquisite da fonte amministrativa