

General Government Participations in Italy

Year 2013

Istat disseminates data on economic units participated by the General Government and on their owned value of shares and other equity.

The "General Government" and "public sector" definitions comply with those of the System of National Accounts (SNA), the European System of Accounts (ESA95) and the Manual on government deficit and debt (MGDD).

The population of General government shareholdings is estimated by Istat through the integration of several administrative sources.

In 2013, units owned by General Government in Italy were 10,964 with a weight of 953,100 in terms of persons employed.

The shareholding considered is any value in the range greater than 0 and up to 100% of the unit capital. 57.6% of the analyzed units is owned by General Government for a share within 50% and 100%, 28.6% for a share below 20% and 13.8% of the units is owned by General Government for a share within 20% and 50%.

The active enterprises owned by General Government in Italy are 7,767 with 927,559 persons employed. The average size amounted to 119 employees per active enterprise.

The territorial distribution of active enterprises showed a concentration in terms of persons employed in central Italy with 54.4% of persons employed and 23.3% of enterprises. The active enterprises average size of central Italy is 279 persons employed per company, strongly influenced by enterprises located in Lazio.

Out of 7,767 active enterprises owned by general government in Italy, 6,120 are participated by at least one regional or local public administration, for a total of 486,676 employees.

If the field is limited to public corporations (with share more than 50%) active enterprises in Italy are 4,715 for a total of 661,919 employees. Net of financial and banking sector (NACE Section K) public corporations generate a total of over 57 billion of value added (approximately 11% of the total enterprises in industry and services).

The sectoral composition and size of the enterprises controlled by the public administration influence the levels of labor productivity (measured in terms of value added per employee), of about 87 thousand euro, compared to about 56,000 euro of all enterprises.

About two thirds of the subsidiaries reported a net profit in 2013 (just under 1 billion euro). The sectors that generate higher volumes of profits are the supply of electricity and gas (702 million) and water services and waste management (348 million). The sector with the largest volume of losses is the sector of transport (-180 million).

FIGURE 1. PARTICIPATED UNITS BY SHARES (TOTAL 10,964). YEAR 2013

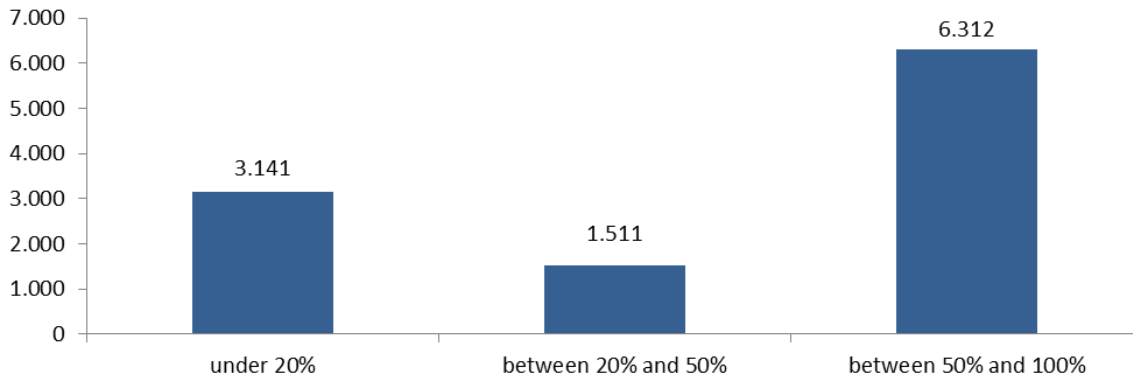
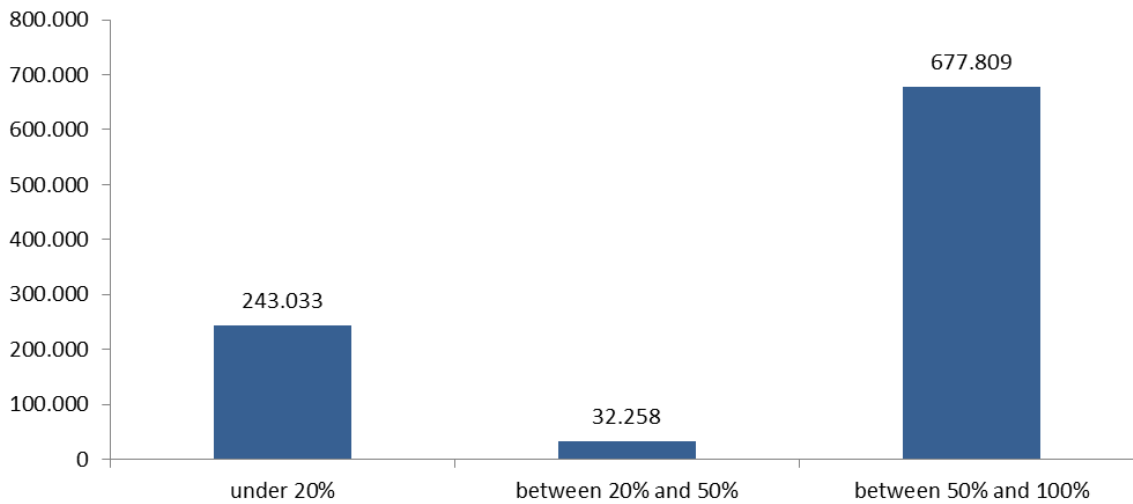


FIGURE 2. PERSONS EMPLOYED OF PARTICIPATED UNITS (TOTAL 953,100). YEAR 2013



For more details please refer to the Italian version

Contact person:

Serena Migliardo (migliardo@istat.it).

phone +39 06 46736223

Domenico De Siena (desiena@istat.it)

phone +39 06 46736218

Censuses and statistical registers directorate

Istat – National Institute of Statistics

Via Tuscolana, 1766 – Rome 00173 Italy