

Marriage in Italy

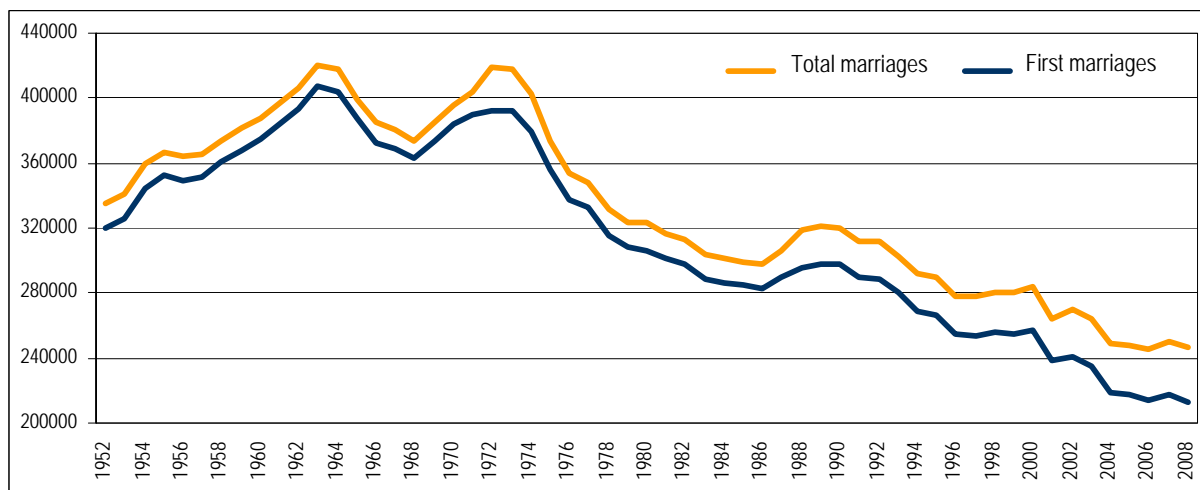
2008

Istat has published the main results of the Survey of Marriages celebrated in Italy, based on municipal Registry office records updated as of 2008. The survey makes it possible to monitor the number of religious and civil ceremonies and weddings involving at least one foreign citizen for each municipality. The individual marriage data in addition make it possible to learn the main socio-demographic characteristics of the marriage partners.

246,613 marriages were celebrated in Italy in 2008, approximately 4 for every 1,000 inhabitants. Marriages have been declining since 1972, when almost 419,000 marriages were celebrated (7.7 for every 1,000 inhabitants).

This decline has taken place for **first marriages**: the number of unions between partners marrying for the first time fell from almost 392,000 in 1972 (93.5% of the total) to 212,476 in 2008 (86.2%). 518 first marriages per 1,000 males and 580 per 1,000 females were recorded in 2008, figures which were almost halved compared with 1972. In addition, first marriages occur at an increasingly later age, with first marriages at an average age of 33.0 for males and 29.9 for females.

Figure 1. Number of marriages and first marriages celebrated in Italy. 1952-2008



In contrast, **second or subsequent marriages** show a progressive increase, with 34,137 unions in 2008, representing 13.8% of the total, against 6.5% in 1972.

The figures confirm an increasing trend in **marriages in which at least one of the partners is of foreign citizenship**: 37,000 in 2008 (15% of the total). Of these the largest share is comprised by “mixed marriages”, i.e. couples with one partner of Italian citizenship and the other of foreign citizenship, with over 24,000 marriages celebrated.

The number of marriages celebrated with only a **civil ceremony** had increased to more than one marriage in three, or 90,582, by 2008. This choice increasingly concerns first marriages too: over a quarter of marriages between partners marrying for the first time were celebrated at

Town Halls, or 1 marriage in 5 if only those in which both partners were Italian are considered, a proportion that almost doubled in 15 years.

Figure 2. Average age of first-marriage partners. 1952-2008

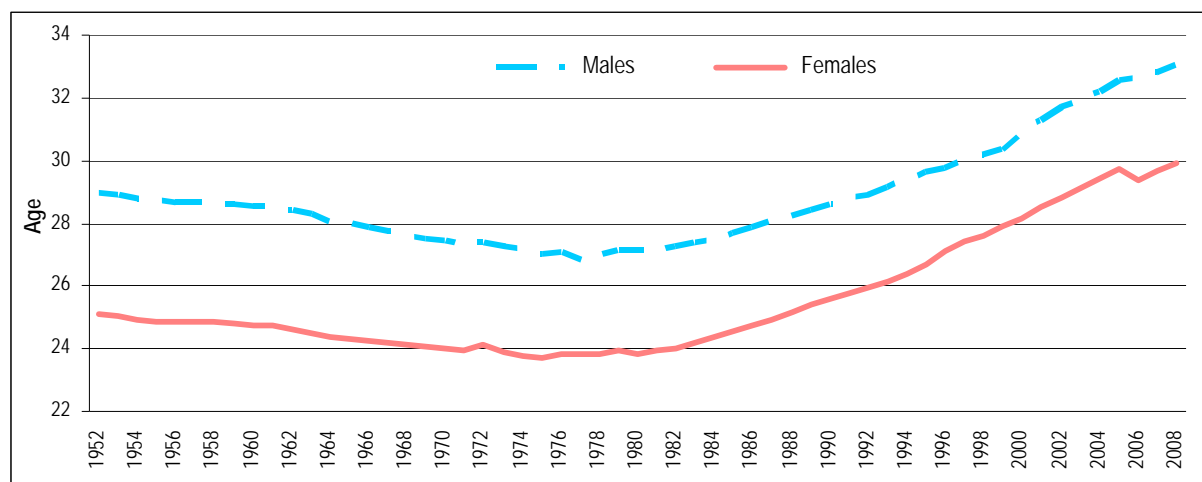


Table 1. Main characteristics of first marriages and partners by region. 2008

REGION	Total marriages	Number of marriages (per 1,000)	First marriages for both partners		First marriages (per 1,000) by sex		Average age at first marriage	
			Absolute values	% values	M	F	M	F
Piemonte	16,258	3.7	12,644	77.8	450.1	515.2	33.2	30.3
Valle d'Aosta	507	4.0	397	78.3	461.0	545.5	34.4	31.1
Lombardia	34,327	3.5	28,347	82.6	419.9	493.6	33.3	30.2
Trentino-Alto Adige	3,563	3.5	2,848	79.9	412.6	467.6	34.0	30.7
<i>Bolzano</i>	<i>1,785</i>	<i>3.6</i>	<i>1,398</i>	<i>78.3</i>	<i>398.0</i>	<i>448.6</i>	<i>34.9</i>	<i>31.7</i>
<i>Trento</i>	<i>1,778</i>	<i>3.4</i>	<i>1,450</i>	<i>81.6</i>	<i>427.5</i>	<i>489.3</i>	<i>33.3</i>	<i>29.8</i>
Veneto	18,661	3.8	15,457	82.8	449.6	531.5	33.4	30.3
Friuli-Venezia Giulia	4,089	3.3	3,161	77.3	392.0	476.6	34.2	30.7
Liguria	6,251	3.9	4,738	75.8	498.3	574.3	34.6	31.2
Emilia-Romagna	14,892	3.5	11,989	80.5	402.0	467.2	34.6	31.1
Toscana	15,083	4.1	12,285	81.4	500.4	570.9	33.9	31.0
Umbria	3,725	4.2	3,255	87.4	542.2	596.4	33.7	30.6
Marche	5,881	3.8	5,170	87.9	474.8	541.0	33.7	30.5
Lazio	22,389	4.0	18,906	84.4	480.6	532.2	34.3	31.1
Abruzzo	4,883	3.7	4,303	88.1	467.1	518.0	33.0	30.0
Molise	1,205	3.8	1,105	91.7	500.9	547.3	33.1	29.8
Campania	31,795	5.5	29,558	93.0	718.4	742.4	31.7	28.6
Puglia	19,714	4.8	18,362	93.1	635.6	672.7	32.1	29.2
Basilicata	2,410	4.1	2,271	94.2	548.5	589.8	33.0	29.7
Calabria	9,305	4.6	8,699	93.5	618.2	638.4	32.3	28.9
Sicilia	24,344	4.8	22,308	91.6	647.8	676.2	31.7	28.5
Sardegna	7,331	4.4	6,673	91.0	526.0	589.9	34.1	31.0
North-west	57,343	3.6	46,126	80.4	435.4	507.3	33.4	30.3
North-east	41,205	3.6	33,455	81.2	422.4	496.2	34.0	30.6
Centre	47,078	4.0	39,616	84.1	490.4	550.1	34.0	30.9
South	69,312	4.9	64,298	92.8	646.2	678.9	32.0	28.9
Islands	31,675	4.7	28,981	91.5	618.9	659.0	32.2	29.1
Italy	246,613	4.1	212,476	86.2	518.1	580.4	33.0	29.9

Table 2. Main characteristics of second and subsequent marriages and their partners by region. 2008

REGION	Divorce rate per 1,000 partners (a)	Marriages with at least one partner marrying for second time		of which: Marriages with at least one divorced partner by combination of marital status of partners									
		Absolute values	% values	Divorced males and unmarried females		Divorced females and unmarried males		Divorced males and divorced females		Divorced males and widows		Divorced females and widowers	
				Absolute values	% values	Absolute values	% values	Absolute values	% values	Absolute values	% values	Absolute values	% values
Piemonte	4.7	3,614	22.2	1,209	7.4	1,146	7.0	887	5.5	55	0.3	120	0.7
Valle d'Aosta	6.3	110	21.7	41	8.1	38	7.5	23	4.5	-	-	2	0.4
Lombardia	4.2	5,980	17.4	2,060	6.0	1,988	5.8	1,308	3.8	101	0.3	161	0.5
Trentino-Alto Adige	4.3	715	20.1	230	6.5	239	6.7	170	4.8	12	0.3	25	0.7
<i>Bolzano</i>	<i>4.5</i>	<i>387</i>	<i>21.7</i>	<i>119</i>	<i>6.7</i>	<i>127</i>	<i>7.1</i>	<i>105</i>	<i>5.9</i>	<i>3</i>	<i>0.2</i>	<i>14</i>	<i>0.8</i>
<i>Trento</i>	<i>4.2</i>	<i>328</i>	<i>18.4</i>	<i>111</i>	<i>6.2</i>	<i>112</i>	<i>6.3</i>	<i>65</i>	<i>3.7</i>	<i>9</i>	<i>0.5</i>	<i>11</i>	<i>0.6</i>
Veneto	3.6	3,204	17.2	1,183	6.3	960	5.1	739	4.0	40	0.2	88	0.5
Friuli-Venezia Giulia	4.3	928	22.7	308	7.5	298	7.3	227	5.6	13	0.3	31	0.8
Liguria	5.2	1,513	24.2	497	8.0	435	7.0	409	6.5	28	0.4	49	0.8
Emilia-Romagna	4.3	2,903	19.5	940	6.3	1,015	6.8	637	4.3	44	0.3	100	0.7
Toscana	4.2	2,798	18.6	1,005	6.7	829	5.5	677	4.5	42	0.3	89	0.6
Umbria	2.4	470	12.6	168	4.5	154	4.1	83	2.2	8	0.2	14	0.4
Marche	3.0	711	12.1	269	4.6	210	3.6	156	2.7	10	0.2	19	0.3
Lazio	3.8	3,483	15.6	1,309	5.8	921	4.1	828	3.7	47	0.2	142	0.6
Abruzzo	2.7	580	11.9	226	4.6	166	3.4	125	2.6	6	0.1	18	0.4
Molise	2.0	100	8.3	33	2.7	35	2.9	20	1.7	3	0.2	3	0.2
Campania	1.9	2,237	7.0	824	2.6	563	1.8	340	1.1	43	0.1	130	0.4
Puglia	1.8	1,352	6.9	552	2.8	357	1.8	220	1.1	19	0.1	63	0.3
Basilicata	1.2	139	5.8	51	2.1	45	1.9	22	0.9	2	0.1	6	0.2
Calabria	1.7	606	6.5	205	2.2	177	1.9	89	1.0	12	0.1	33	0.4
Sicilia	2.5	2,036	8.4	691	2.8	435	1.8	336	1.4	39	0.2	110	0.5
Sardegna	2.9	658	9.0	271	3.7	177	2.4	111	1.5	9	0.1	27	0.4
North-west	4.5	11,217	19.6	3,807	6.6	3,607	6.3	2,627	4.6	184	0.3	332	0.6
North-east	4.0	7,750	18.8	2,661	6.5	2,512	6.1	1,773	4.3	109	0.3	244	0.6
Centre	3.7	7,462	15.9	2,751	5.8	2,114	4.5	1,744	3.7	107	0.2	264	0.6
South	1.9	5,014	7.2	1,891	2.7	1,343	1.9	816	1.2	85	0.1	253	0.4
Islands	2.6	2,694	8.5	962	3.0	612	1.9	447	1.4	48	0.2	137	0.4
Italy	3.4	34,137	13.8	12,072	4.9	10,188	4.1	7,407	3.0	533	0.2	1,230	0.5

(a) The rates are calculated taking as the denominator the numbers of married partners from the Istat survey "Municipal resident population by sex, year of birth and marital status".

Table 3. Marriages by combination of citizenship of partners and region. 2008 (*absolute and percentage values for total marriages*)

REGION	Type of couple									
	Partners both Italian		Italian husband, foreign wife		Foreign husband, Italian wife		Partners both foreign		Marriages with at least one foreign partner	
	Absolute values	% values	Absolute values	% values	Absolute values	% values	Absolute values	% values	Absolute values	% values
Piemonte	13,142	80.8	1,592	9.8	598	3.7	926	5.7	3,116	19.2
Valle d'Aosta	420	82.8	50	9.9	11	2.2	26	5.1	87	17.2
Lombardia	27,630	80.5	3,404	9.9	1,220	3.6	2,073	6.0	6,697	19.5
Trentino-Alto Adige	2,751	77.2	354	9.9	135	3.8	323	9.1	812	22.8
<i>Bolzano</i>	<i>1,269</i>	<i>71.1</i>	<i>179</i>	<i>10.0</i>	<i>75</i>	<i>4.2</i>	<i>262</i>	<i>14.7</i>	<i>516</i>	<i>28.9</i>
<i>Trento</i>	<i>1,482</i>	<i>83.4</i>	<i>175</i>	<i>9.8</i>	<i>60</i>	<i>3.4</i>	<i>61</i>	<i>3.4</i>	<i>296</i>	<i>16.6</i>
Veneto	14,742	79.0	1,641	8.8	479	2.6	1,799	9.6	3,919	21.0
Friuli-Venezia Giulia	3,366	82.3	419	10.3	118	2.9	186	4.5	723	17.7
Liguria	4,889	78.2	697	11.2	265	4.2	400	6.4	1,362	21.8
Emilia-Romagna	11,788	79.2	1,650	11.0	560	3.8	894	6.0	3,104	20.8
Toscana	11,179	74.1	1,382	9.1	568	3.8	1,954	13.0	3,904	25.9
Umbria	3,033	81.4	369	10.0	91	2.4	232	6.2	692	18.6
Marche	5,000	85.0	527	9.0	134	2.3	220	3.7	881	15.0
Lazio	18,312	81.8	2,046	9.1	616	2.8	1,415	6.3	4,077	18.2
Abruzzo	4,330	88.7	375	7.6	92	1.9	86	1.8	553	11.3
Molise	1,131	93.9	57	4.7	11	0.9	6	0.5	74	6.1
Campania	28,545	89.8	1,339	4.2	549	1.7	1,362	4.3	3,250	10.2
Puglia	18,826	95.5	554	2.8	258	1.3	76	0.4	888	4.5
Basilicata	2,243	93.1	110	4.5	33	1.4	24	1.0	167	6.9
Calabria	8,653	93.0	494	5.3	98	1.1	60	0.6	652	7.0
Sicilia	22,868	93.9	903	3.7	359	1.5	214	0.9	1,476	6.1
Sardegna	6,847	93.4	277	3.8	113	1.5	94	1.3	484	6.6
North-west	46,081	80.4	5,743	9.9	2,094	3.7	3,425	6.0	11,262	19.6
North-east	32,647	79.2	4,064	9.9	1,292	3.1	3,202	7.8	8,558	20.8
Centre	37,524	79.7	4,324	9.2	1,409	3.0	3,821	8.1	9,554	20.3
South	63,728	91.9	2,929	4.3	1,041	1.5	1,614	2.3	5,584	8.1
Islands	29,715	93.8	1,180	3.7	472	1.5	308	1.0	1,960	6.2
Italy	209,695	85.0	18,240	7.4	6,308	2.6	12,370	5.0	36,918	15.0

Source: Istat, Survey of marriages.

Table 4. Marriages with at least one foreign partner by the top 15 countries of citizenship. 2008 (absolute and percentage values)

COUNTRY OF CITIZENSHIP	Italian husband, foreign wife		COUNTRY OF CITIZENSHIP	Foreign husband, Italian wife		COUNTRY OF CITIZENSHIP	Both partners foreign	
	Absolute values	% values		Absolute values	% values		Absolute values	% values
Romania	2,506	13.7	Morocco	1,399	22.2	Romania	1,202	18.4
Ukraine	1,940	10.6	Albania	569	9.0	China	833	12.7
Brazil	1,745	9.6	Tunisia	480	7.6	Nigeria	546	8.4
Poland	1,216	6.7	Egypt	382	6.1	Morocco	535	8.2
Russia	961	5.3	Brazil	288	4.6	Moldova	429	6.6
Moldova	866	4.7	Senegal	286	4.5	Ecuador	378	5.8
Morocco	820	4.5	United Kingdom	269	4.3	Peru	357	5.5
Albania	738	4.0	Germany	182	2.9	Ukraine	263	4.0
Peru	486	2.7	France	179	2.8	Albania	229	3.5
Ecuador	445	2.4	Un. States of America	176	2.8	Brazil	166	2.5
Cuba	409	2.2	Romania	137	2.2	Poland	154	2.4
Nigeria	393	2.2	Cuba	108	1.7	Ghana	131	2.0
Germany	350	1.9	Spain	94	1.5	Senegal	81	1.2
Dominican Republic	272	1.5	Nigeria	90	1.4	Ivory Coast	68	1.0
Colombia	240	1.3	Algeria	84	1.3	Poland	61	0.9
Other Countries	4,853	26.6	Other countries	1,585	25.1	Other countries	1,102	16.9
Total	18,240	100.0	Total	6,308	100.0	Total	6,535	100.0

Source: Istat, Survey of marriages.

(a) The citizenship indicated is that of the wife; (b) At least one of the two partners is resident in Italy.

Table 5. Marriages by type of couple, ceremony and type of marriage. 2008 (absolute and percentage values)

TYPE OF MARRIAGE	Type of couple								
	At least one foreign partner			Both partners Italian			Total		
	Religious	Civil	Total	Religious	Civil	Total	Religious	Civil	Total
ABSOLUTE VALUES									
First marriages	4,609	22,118	26,727	148,598	37,151	185,749	153,207	59,269	212,476
Subsequent marriages	351	9,840	10,191	2,473	21,473	23,946	2,824	31,313	34,137
Total	4,960	31,958	36,918	151,071	58,624	209,695	156,031	90,582	246,613
PERCENTAGE VALUES									
First marriages	17.2	82.8	100.0	80.0	20.0	100.0	72.1	27.9	100.0
Subsequent marriages	3.4	96.6	100.0	10.3	89.7	100.0	8.3	91.7	100.0
Total	13.4	86.6	100.0	72.0	28.0	100.0	63.3	36.7	100.0

Source: Istat, Survey of marriages.

Table 6. Marriages by property regime chosen by partners and by region. 2008

REGION	Property regime			Total
	Shared property	Separate property	Marriages with separate property regime (per 100 marriages)	
Piemonte	4,633	11,625	71.5	16,258
Valle d'Aosta	131	376	74.2	507
Lombardia	12,899	21,428	62.4	34,327
Trentino-Alto Adige	1,604	1,959	55.0	3,563
<i>Bolzano</i>	847	938	52.5	1,785
<i>Trento</i>	757	1,021	57.4	1,778
Veneto	7,321	11,340	60.8	18,661
Friuli-Venezia Giulia	1,614	2,475	60.5	4,089
Liguria	2,119	4,132	66.1	6,251
Emilia-Romagna	5,139	9,753	65.5	14,892
Toscana	5,387	9,696	64.3	15,083
Umbria	1,572	2,153	57.8	3,725
Marche	1,654	4,227	71.9	5,881
Lazio	8,294	14,095	63.0	22,389
Abruzzo	1,740	3,143	64.4	4,883
Molise	469	736	61.1	1,205
Campania	12,218	19,577	61.6	31,795
Puglia	7,606	12,108	61.4	19,714
Basilicata	845	1,565	64.9	2,410
Calabria	3,541	5,764	61.9	9,305
Sicilia	9,566	14,778	60.7	24,344
Sardegna	3,711	3,620	49.4	7,331
North-west	19,782	37,561	65.5	57,343
North-east	15,678	25,527	62.0	41,205
Centre	16,907	30,171	64.1	47,078
South	26,419	42,893	61.9	69,312
Islands	13,277	18,398	58.1	31,675
Italy	92,063	154,550	62.7	246,613

Source: Istat, Survey of marriages.

For more detailed information please refer to the Italian version

Time series are available at http://demo.istat.it/index_e.html

Contact person:

Statistics on demographic structure and dynamics

ISTAT – Italian National Institute of Statistics

Viale Liegi 13 – 00198 Rome, Italy

Giancarlo Gualtieri

ph. +39 06 4673.7356-7337

gualtier@istat.it