

## Demographic indicators

Estimates for the year 2017

The population at 1st January 2018 is estimated to be 60,494,000; the decrease on the previous year was around 100,000 units (-1.6 per thousand).

The number of live births dropped to 464 thousand, 2% less than in 2016 and new minimum level ever.

The number of deaths was 647 thousand, 31 thousand more than in 2016 (+5.1%). In relative terms 10.7 individuals died per thousand inhabitants in 2017, compared to 10.1 in 2016.

The natural balance was negative (-183 thousand), representing the lowest result ever.

The net international migration in 2017 amounted to +184 thousand, recording a consistent increase on the previous year (+40 thousand). Compared to the latter it was determined by a higher number of inflows, 337 thousand (+12%), and a lower number of outflows, 153 thousand (-2.6%).

Out of 337 thousand registrations from abroad, 292 thousand concerned individuals of foreign nationality (+10.9%) while repatriations of Italians were 45 thousand (+19.9%).

Only 40 thousand cancellations to abroad on overall 153 thousand in 2017 were due to non-national citizens (-5%). The remaining 112 thousand concerned Italian citizens (-1.8%).

Despite a lower level of births, the total fertility rate was unchanged from the previous year, equal to 1.34 children per woman. Meanwhile, the trend to have children at later ages was confirmed: the mean age at childbearing had grown to 31.8 years.

There were no significant changes in life expectancy at birth, 80.6 years for men and 84.9 years for women. The survival gap between women and men dropped to 4.3 years.

The changes of residence within the national borders were above 1 million 360 thousand (+2.2%). Among them, the interregional movements were 328 thousand, that is 24.2% of total transfers.

Non nationals at 1 January 2018 were 5 million 29 thousand (8.4% of the total population).

The population change for non national citizens was positive both for natural increase (+58 thousand) and net migration (+256 thousand). The quota of foreign citizens was resized from 224 thousand acquisitions of Italian citizenship (+11%) and 132 thousand de-registrations for unavailability at the usual residence.

The population of Italian citizenship dropped to 55 million 430 thousand (-113 thousand). The population change of Italians was both negative for natural increase (-241 thousand) and net migration (-72 thousand).

At 1 January 2018, 22.6% of the population was aged 65 or over, 64.1% was aged between 15 and 64, while only 13.4% was under 15 years of age. The mean age of the population exceeded 45 years.

FIGURE 1. POPULATION GROWTH RATE, BY REGION. Year 2017, estimate, per thousand inhabitants

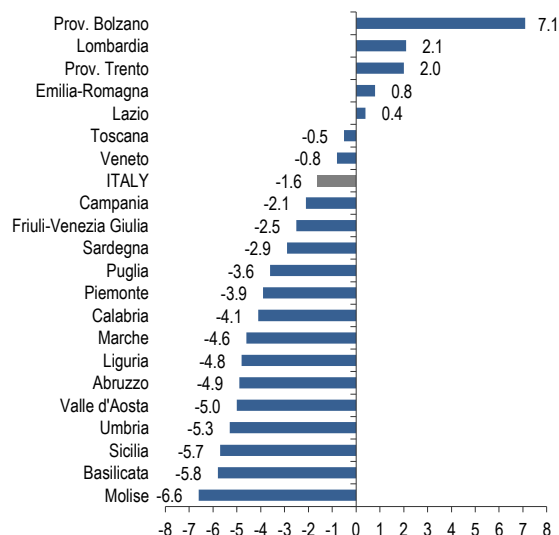
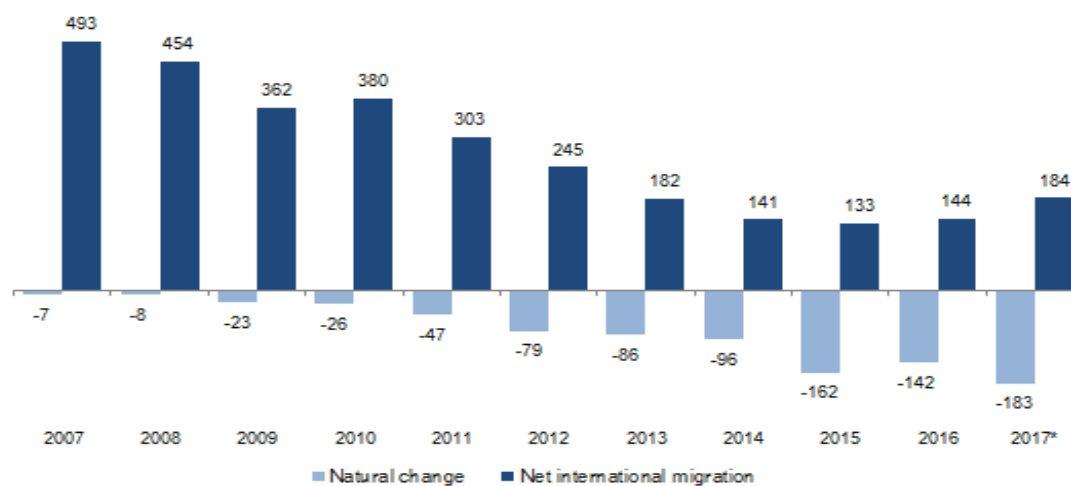


TABLE 1. MAIN COMPONENTS OF THE POPULATION CHANGE. Year 2017, thousand, estimates

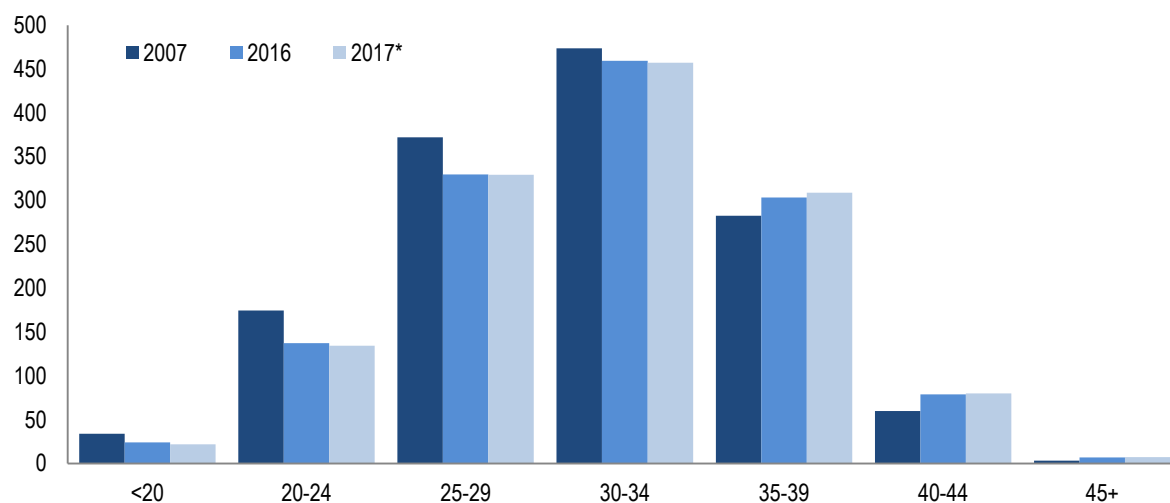
Regions / Geographic Area	Population at start	Natural increase	Net international migration	Net internal migration	Net other reasons	Population at end
Piemonte	4,392.5	-21.2	14.3	0.7	-10.8	4,375.6
Valle d'Aosta	126.9	-0.5	0.3	0.0	-0.5	126.3
Lombardia	10,019.2	-19.2	35.7	14.9	-10.6	10,039.9
Trentino-Alto Adige	1,062.9	0.6	3.2	2.6	-1.6	1,067.7
<i>Bolzano-Bozen</i>	524.3	1.1	1.4	1.6	-0.3	528.0
<i>Trento</i>	538.6	-0.5	1.8	1.0	-1.3	539.7
Veneto	4,907.5	-12.4	13.0	2.9	-7.6	4,903.5
Friuli-Venezia Giulia	1,217.9	-6.5	3.6	1.7	-1.9	1,214.8
Liguria	1,565.3	-12.3	6.3	1.5	-3.1	1,557.8
Emilia-Romagna	4,448.8	-17.4	18.3	11.8	-9.3	4,452.2
Toscana	3,742.4	-17.9	18.2	3.7	-5.8	3,740.7
Umbria	888.9	-4.7	2.5	-0.9	-1.6	884.2
Marche	1,538.1	-7.8	4.4	-0.9	-2.7	1,531.1
Lazio	5,898.1	-14.2	19.9	2.1	-5.1	5,900.8
Abruzzo	1,322.2	-5.7	3.2	-2.2	-1.9	1,315.8
Molise	310.4	-1.8	1.9	-1.2	-1.0	308.4
Campania	5,839.1	-6.1	14.5	-18.5	-2.2	5,826.7
Puglia	4,063.9	-9.7	6.7	-8.7	-2.8	4,049.3
Basilicata	570.4	-2.4	2.0	-2.3	-0.5	567.1
Calabria	1,965.1	-4.8	7.1	-8.5	-1.8	1,957.1
Sicilia	5,056.6	-12.3	5.2	-15.4	-6.5	5,027.7
Sardegna	1,653.1	-6.4	3.7	-1.7	-0.5	1,648.3
<b>Italy</b>	<b>60,589.4</b>	<b>-182.6</b>	<b>184.0</b>	<b>-18.5</b>	<b>-77.6</b>	<b>60,494.8</b>
<b>North</b>	<b>27,741.0</b>	<b>-88.8</b>	<b>94.8</b>	<b>36.1</b>	<b>-45.3</b>	<b>27,737.7</b>
<i>North-west</i>	<b>16,103.9</b>	<b>-53.1</b>	<b>56.6</b>	<b>17.1</b>	<b>-25.0</b>	<b>16,099.5</b>
<i>North-east</i>	<b>11,637.1</b>	<b>-35.7</b>	<b>38.2</b>	<b>19.0</b>	<b>-20.4</b>	<b>11,638.2</b>
<b>Centre</b>	<b>12,067.5</b>	<b>-44.6</b>	<b>45.0</b>	<b>3.9</b>	<b>-15.0</b>	<b>12,056.8</b>
<b>South and Islands</b>	<b>20,780.9</b>	<b>-49.1</b>	<b>44.3</b>	<b>-58.5</b>	<b>-17.2</b>	<b>20,700.3</b>
<i>South</i>	<b>14,071.2</b>	<b>-30.5</b>	<b>35.4</b>	<b>-41.5</b>	<b>-10.3</b>	<b>14,024.3</b>
<i>Islands</i>	<b>6,709.8</b>	<b>-18.6</b>	<b>8.8</b>	<b>-17.0</b>	<b>-7.0</b>	<b>6,676.0</b>

FIGURE 2. NATURAL CHANGE AND NET INTERNATIONAL MIGRATION – ITALY. Years 2007-2017, thousand



(\*) 2017 estimate.

**FIGURE 3. CUMULATED FERTILITY RATES BY AGE GROUP OF THE MOTHER – ITALY**  
Years 2007, 2016 and 2017\*, per thousand



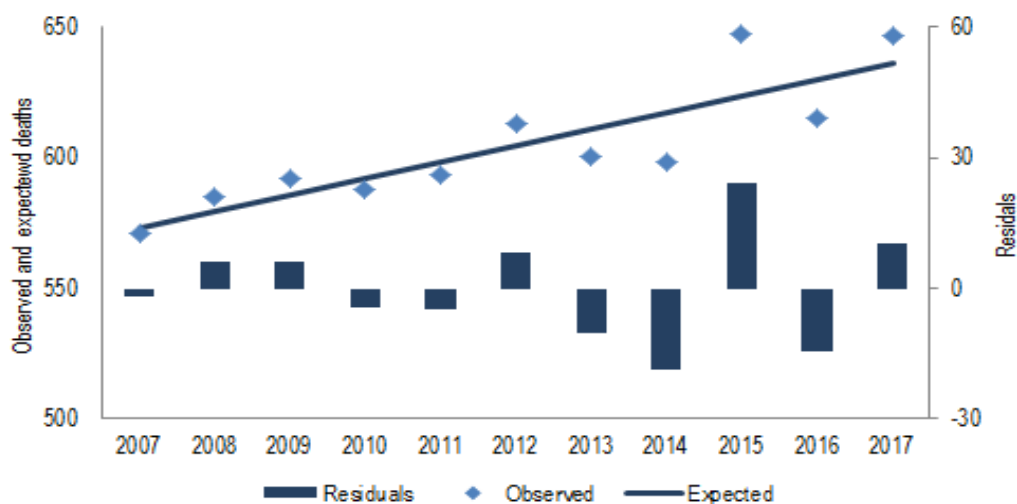
(\*) 2017 estimate.

**TABLE 2. LIVE BIRTHS BY CITIZENSHIP OF THE PARENTS – ITALY.** Years 2007-2017, thousand

Years	Italian parents	Foreign parents	Foreign mother / italian father	Italian mother/ foreign father	Total
2007	477	64	18	5	564
2008	480	72	19	5	577
2009	467	77	20	5	569
2010	457	78	21	5	562
2011	441	79	21	6	547
2012	427	80	22	6	534
2013	410	78	22	4	514
2014	399	75	24	5	503
2015	385	72	22	6	486
2016	373	69	24	7	473
2017*	366	66	24	8	464

(\*) 2017 estimate.

**FIGURE 4. REGISTERED DEATHS, EXPECTED DEATHS AND RESIDUALS – ITALY .** Years 2007-2017\*, thousand



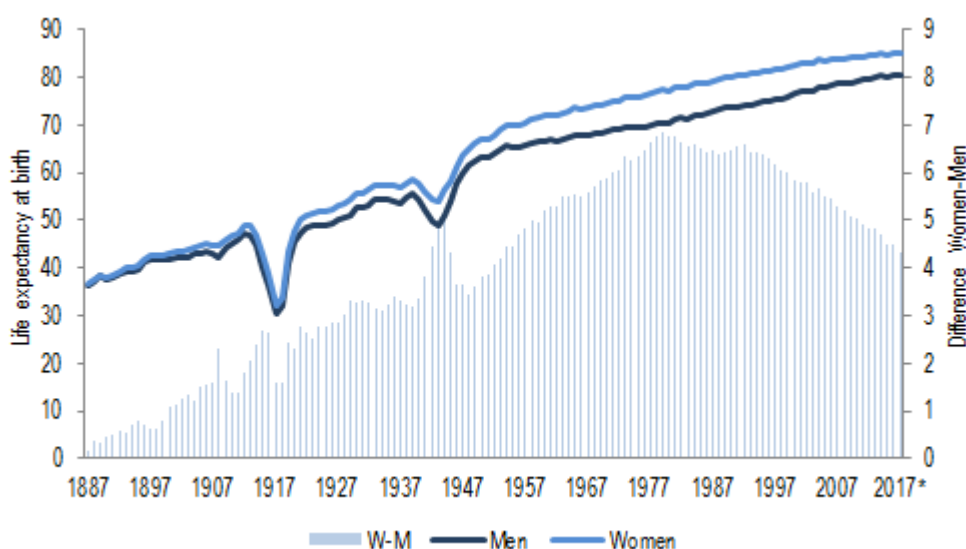
(\*) 2017 estimate. Residual: difference between observed and expected deaths.

TABLE 3. CRUDE AND STANDARDIZED MORTALITY RATES BY REGION – ITALY. Years 2015-2017\*, per thousand inhabitants

REGIONS	Crude rate			Standardized rate			REGIONS	Crude rate			Standardized rate		
	2015	2016	2017	2015	2016	2017		2015	2016	2017	2015	2016	2017
Piemonte	12.3	11.6	12.1	9.1	8.4	8.5	Molise	12.4	11.5	12.7	8.9	8.1	8.7
Valle d'Aosta	11.8	10.9	11.2	9.4	8.5	8.6	Campania	9.7	9.1	9.6	10.5	9.6	10.0
Lombardia	9.9	9.4	9.9	8.5	7.8	8.0	Puglia	9.7	9.2	10.0	8.8	8.2	8.6
Trentino-Alto Adige	8.9	8.7	8.8	7.8	7.5	7.4	Basilicata	11.2	10.8	11.5	9.0	8.5	8.8
<i>Bolzano-Bozen</i>	8.4	8.1	8.3	8.0	7.6	7.5	Calabria	10.3	9.8	10.5	9.1	8.5	8.9
<i>Trento</i>	9.4	9.2	9.3	7.7	7.4	7.2	Sicilia	10.4	9.9	10.7	9.7	9.0	9.5
Veneto	10.1	9.7	10.0	8.3	7.9	7.9	Sardegna	10.0	9.8	10.1	8.6	8.1	8.2
Friuli-Venezia Giulia	12.1	11.6	12.0	8.5	8.0	8.1	<b>Italy</b>	<b>10.7</b>	<b>10.1</b>	<b>10.7</b>	<b>8.8</b>	<b>8.2</b>	<b>8.4</b>
Liguria	14.2	13.3	14.1	8.8	8.0	8.3	<b>North</b>	<b>10.9</b>	<b>10.4</b>	<b>10.8</b>	<b>8.5</b>	<b>8.0</b>	<b>8.1</b>
Emilia-Romagna	11.6	11.1	11.5	8.4	7.9	8.1	<b>North-west</b>	<b>11.0</b>	<b>10.4</b>	<b>10.9</b>	<b>8.7</b>	<b>8.0</b>	<b>8.2</b>
Toscana	12.1	11.3	11.9	8.5	7.8	8.1	<b>North-east</b>	<b>10.8</b>	<b>10.4</b>	<b>10.7</b>	<b>8.3</b>	<b>7.9</b>	<b>7.9</b>
Umbria	12.1	11.5	12.3	8.3	7.8	8.1	<b>Centre</b>	<b>11.0</b>	<b>10.5</b>	<b>11.0</b>	<b>8.6</b>	<b>8.1</b>	<b>8.2</b>
Marche	11.8	11.2	12.2	8.3	7.8	8.2	<b>South and Islands</b>	<b>10.2</b>	<b>9.6</b>	<b>10.3</b>	<b>9.5</b>	<b>8.8</b>	<b>9.1</b>
Lazio	9.9	9.6	9.9	8.8	8.3	8.4	<b>South</b>	<b>10.1</b>	<b>9.5</b>	<b>10.2</b>	<b>9.5</b>	<b>8.8</b>	<b>9.1</b>
Abruzzo	11.6	11.0	11.7	8.8	8.2	8.5	<b>Islands</b>	<b>10.3</b>	<b>9.8</b>	<b>10.6</b>	<b>9.4</b>	<b>8.8</b>	<b>9.2</b>

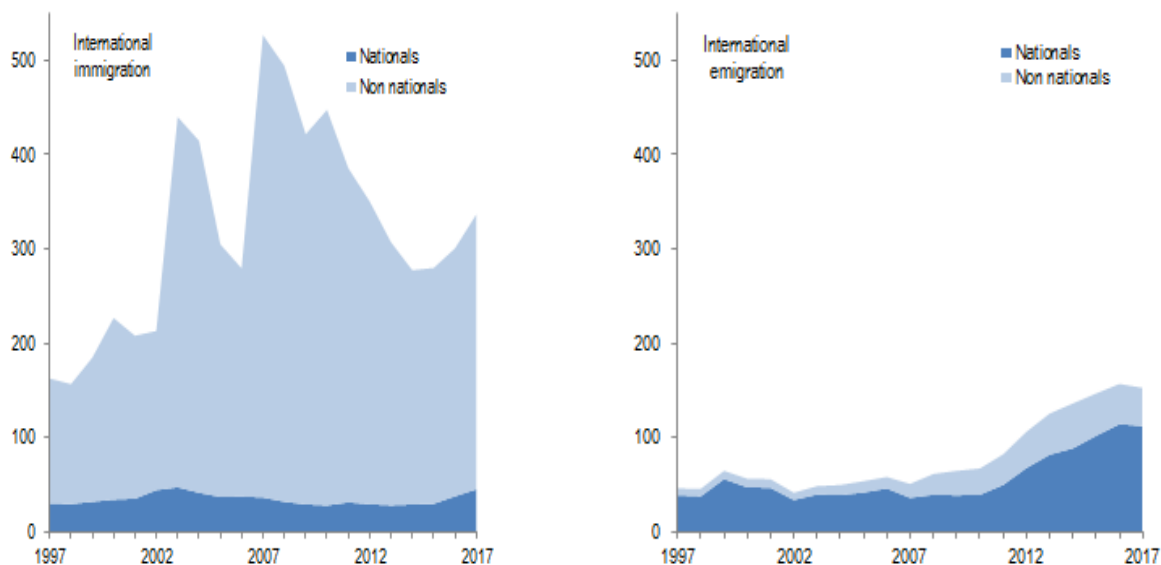
(\*) 2017 estimate. Direct method of standardisation to the population EU28 on 1<sup>st</sup> January 2015.

FIGURE 5. LIFE EXPECTANCY AT BIRTH AND GENDER GAP – ITALY. Years 1887-2017\*



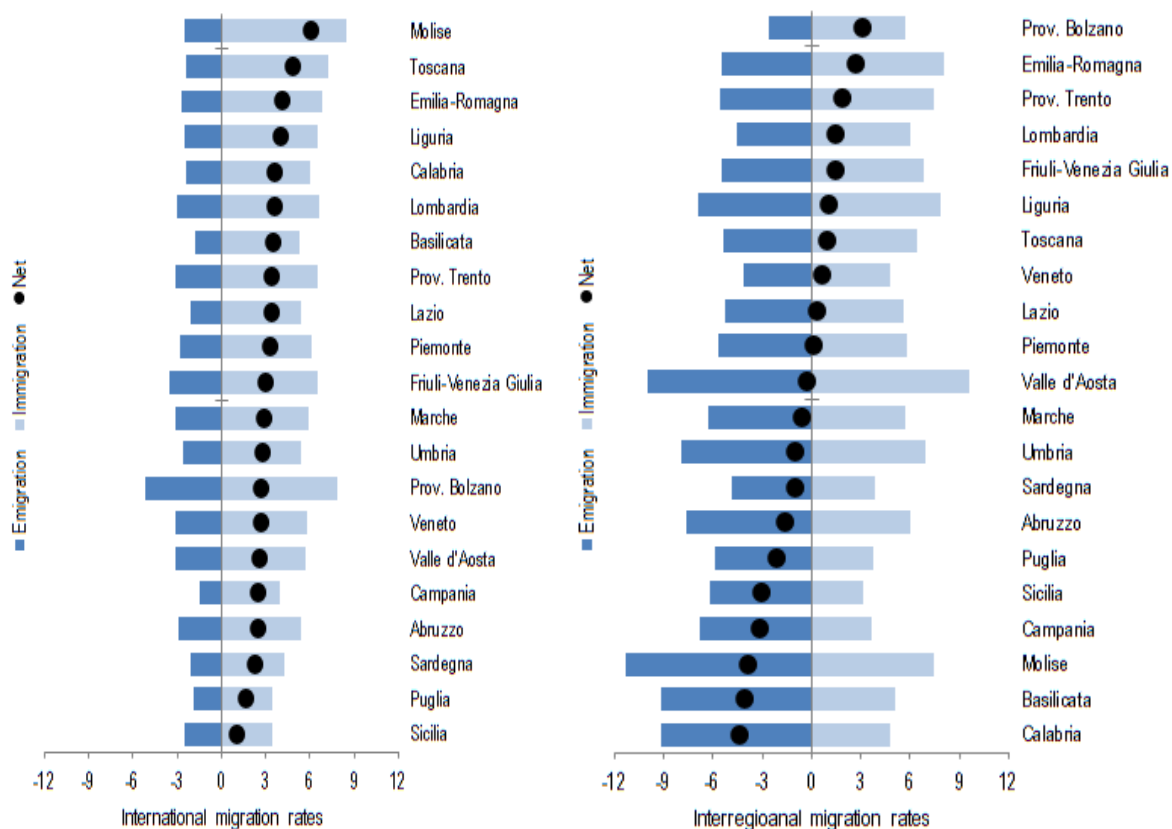
(\*) 2017 estimate.

FIGURE 6. INTERNATIONAL IMMIGRATION AND EMIGRATION BY MAIN CITIZENSHIP – ITALY. Years 1997-2017\*, thousand



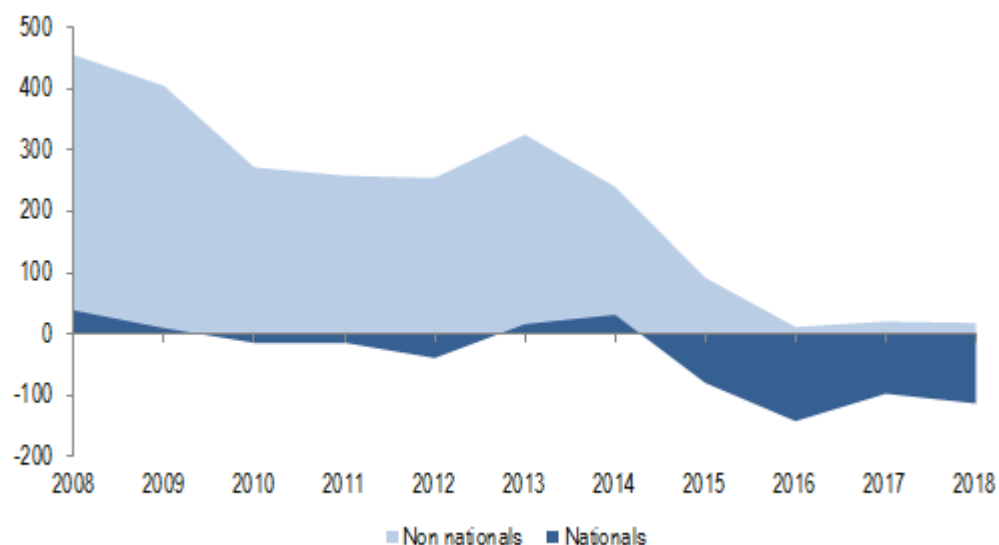
(\*) 2017 estimate.

FIGURE 7. INTERNATIONAL AND INTERREGIONAL MIGRATION RATES, BY REGION – ITALY  
Year 2017\*, per thousand inhabitants



(\*) Estimate.

**FIGURE 8. YEARLY CHANGE OF THE POPULATION BY CITIZENSHIP – ITALY**  
 Years 2008-2018\*, January 1<sup>st</sup>, thousand



(\*) 2018 estimate.

**TABLE 4. MAIN INDICATORS OF THE POPULATION AGEING – ITALY.** Years 2008-2018\*, January 1<sup>st</sup>

INDICATOR	2008	2009	2010	2011	2012	2013	2014	2015	2016	2017	2018
Population aged 0-14 (%)	14.1	14.1	14.1	14.1	14.0	14.0	13.9	13.8	13.7	13.5	13.4
Population aged 15-64 (%)	65.7	65.6	65.5	65.4	65.2	64.8	64.7	64.5	64.3	64.2	64.1
<i>Population aged 15-39 (%)</i>	31.5	31.0	30.5	29.9	29.6	29.0	28.6	28.1	27.7	27.3	27.0
<i>Population aged 40-64 (%)</i>	34.2	34.6	35.0	35.5	35.6	35.8	36.1	36.3	36.6	36.9	37.1
Population aged 65 and above (%)	20.2	20.3	20.4	20.5	20.8	21.2	21.4	21.7	22.0	22.3	22.6
<i>Population aged 65-84 (%)</i>	17.8	17.8	17.8	17.8	17.9	18.2	18.3	18.6	18.8	18.9	19.1
<i>Population aged 85 and above (%)</i>	2.4	2.5	2.6	2.7	2.9	3.0	3.1	3.2	3.3	3.4	3.5
Dependency ratio (100)	52.1	52.4	52.7	52.8	53.5	54.2	54.6	55.1	55.5	55.8	56.1
Old age dependency ratio (100)	30.7	30.9	31.2	31.3	32.0	32.7	33.1	33.7	34.3	34.8	35.2
Ageing index (100)	143.4	144.1	144.8	145.7	148.6	151.4	154.1	157.7	161.4	165.3	168.7
Mean age (years)	43.1	43.2	43.4	43.6	43.8	44.0	44.2	44.4	44.7	44.9	45.2
Population (million)	58.7	59.0	59.2	59.4	59.4	59.7	60.8	60.8	60.7	60.6	60.5

(\*) 2018 estimate.

**For more details please refer to the Italian version**

Contact persons:

**Marco Marsili** ([marsili@istat.it](mailto:marsili@istat.it))

Phone: 0646732606

**Marco Battaglini** ([battaglini@istat.it](mailto:battaglini@istat.it))

Phone: 0646737341

Istat – National Institute of Statistics

Via Balbo, 16 – Rome 00184 Italy