



Ministero dello Sviluppo Economico



Dipartimento per lo Sviluppo
e la Coesione Economica

DPS AND CPT EXPLORER: CONNECTING DATA & POLICY

CARLO AMATI – SIMONA DE LUCA

**Italian Ministry of Economic Development
Department for Development and Economic Cohesion (DPS)
Public investments evaluation and verification unit**

**ISTAT
Visualize, eXplore, Know
April, 26th 2010**



There is often a breakdown

between
DATA

and
POLICY



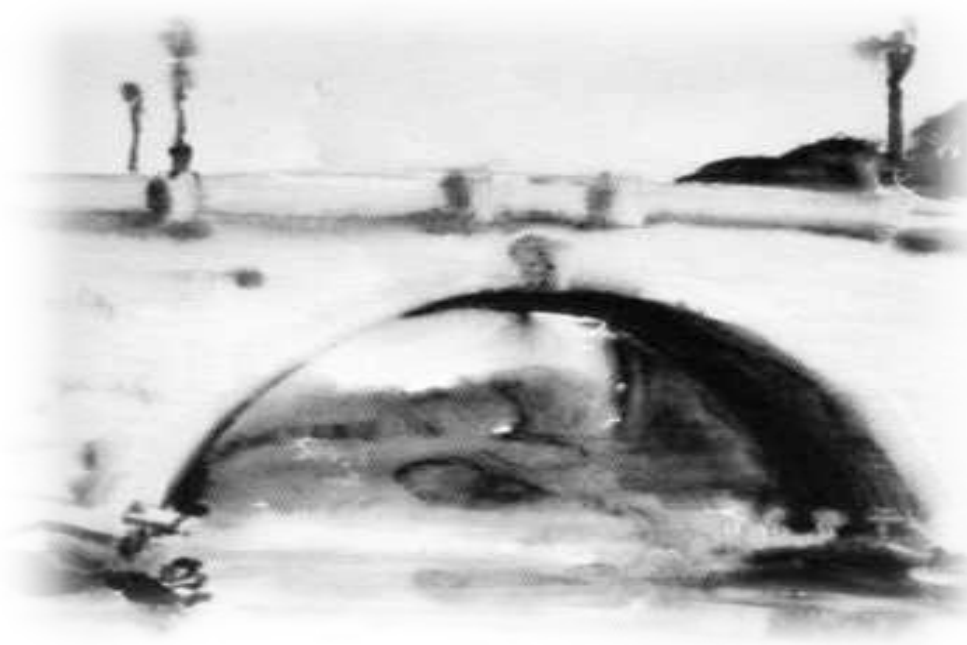
Traditional approach —
→ Information not easy to read
→ Data overload

Risk of misuse (partial, irrelevant, misleading figures)



Bridge the gap

between
DATA



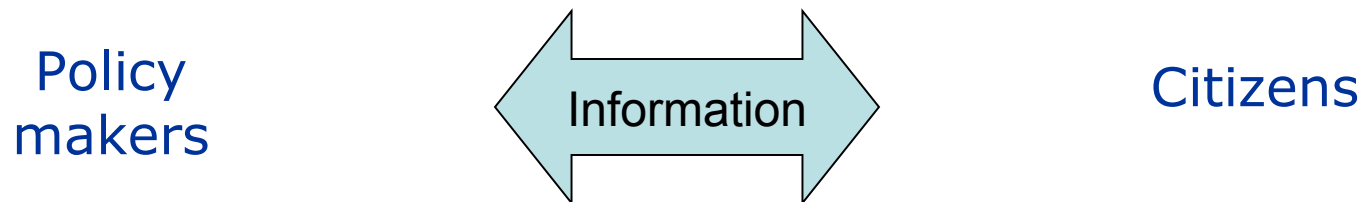
and
POLICY

How?



A possible web 2.0 path

- ✿ **innovative tools** to explore indicators in order to measure performances of public administrations
- ✿ intensive use of **web-based applications** whereby the user can produce contents, give direct feedback, be a member of a network

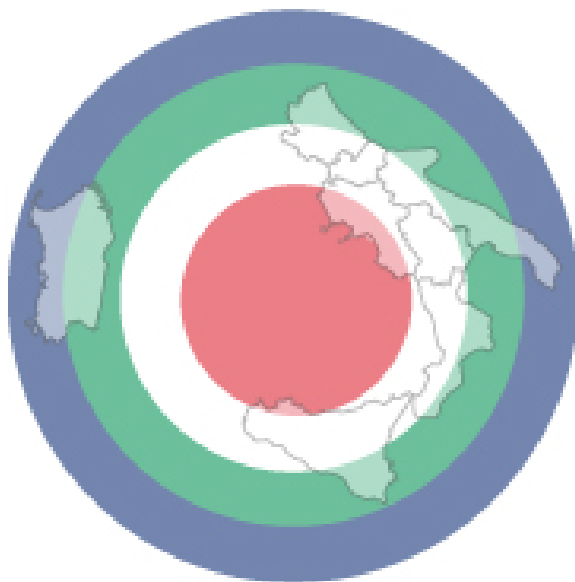


- ✓ measuring territorial context → place-based policy decisions
- ✓ recursive sequence policy objectives/policy instruments/data
- ✓ targeting policy actions and broadly assessing their effectiveness

In 2007-2013 regional development policy
an innovative performance-based mechanism



“Obiettivi di Servizio” Target outcomes for Southern regions



- **3 Billion euros**
- **8 Regions involved**
- **4 Themes**
 - Education
 - Child and elderly care
 - Water service
 - Urban waste
- **11 Indicators**

Targets set at minimum standard

Targets equal for all Regions

Sub-regional performance assessment

The governance role of DPS



Regional level

Major improvements since 2000-2006 programming period

- ✿ Formal agreement DPS-ISTAT to finance the production of territorial data (e.g. Context Indicators)

www.dps.tesoro.it/convenzioni_DPS_ISTAT.asp

www.istat.it/ambiente/contesto/infoterr/index.html

- ✿ Regional Public Accounts: DPS produces data on public financial flows

www.dps.tesoro.it/cpt/cpt.asp

- ✿ Special agreements on territorial data needed for “Obiettivi di Servizio”

www.dps.tesoro.it/obiettivi_servizio/



Other territorial levels

Statistical Atlas of Municipalities (Atlante Statistico dei Comuni)

http://www.istat.it/dati/catalogo/20061102_00/

Sub-regional “Obiettivi di Servizio” incentive mechanisms

Water service – Optimal Territorial Areas (ATO) level

Child care – Municipality level

Elderly care – Health service districts (ASL) level

Urban Waste – Municipality level

Micro-data

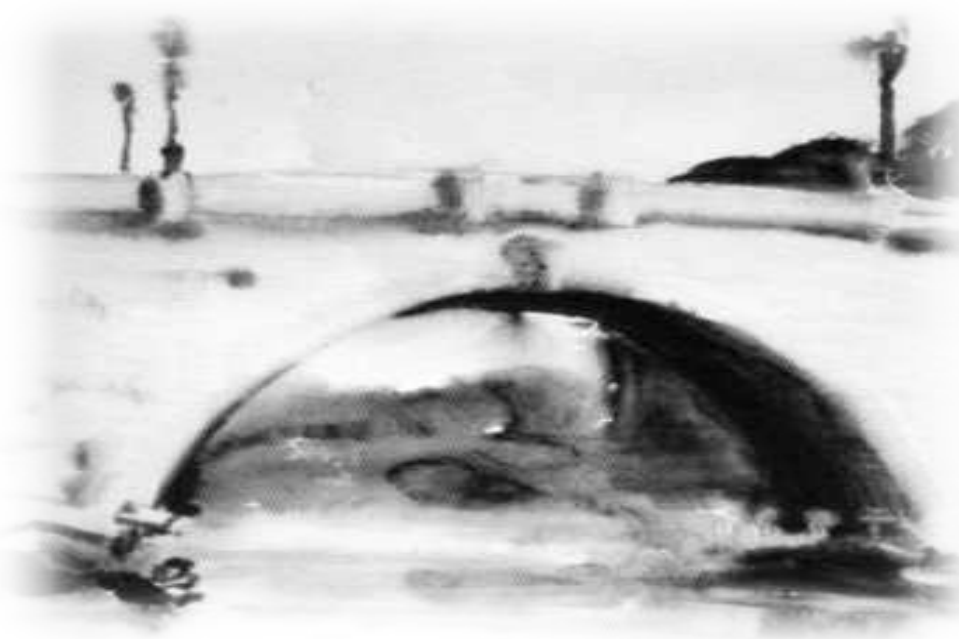
Public procurements

Duration and expenditure of public investment projects

Subsidies

A lot of work to do....

DATA



POLICY

Web 2.0 innovative tools

DPS  explorer

 CPT  explorer

The innovation path in sharing information



Table



Chart



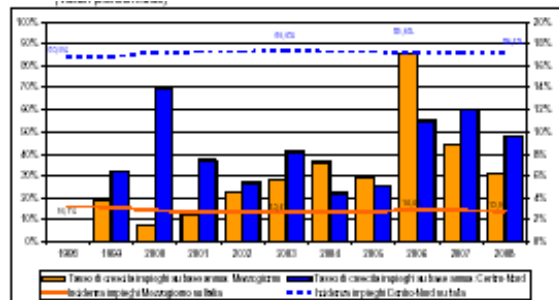
Map



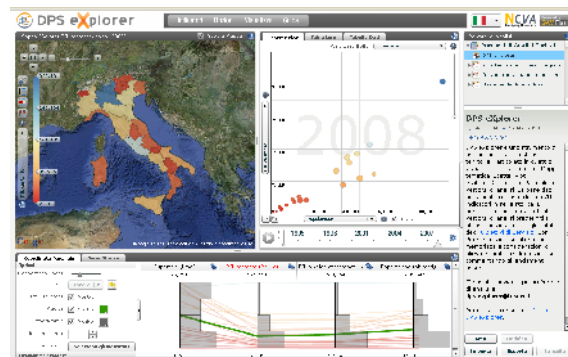
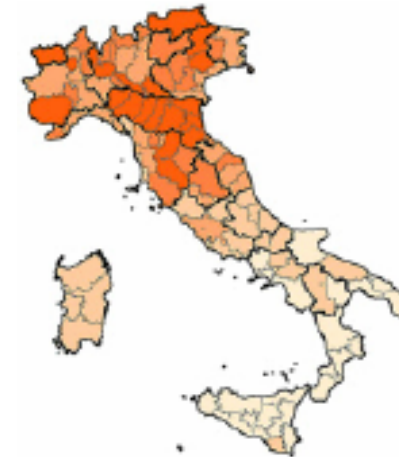
Story



Wiki



| Sistema CPT | Nord-Ovest | Nord-Est | Centro | Centro-Nord | Permanenza |
|---------------------------------------|------------|----------|--------|-------------|------------|
| Appalti lavori in Pubblica | 0.0 | 0.1 | 0.1 | 0.0 | 0 |
| Altre trasporti | 4.9 | 3.6 | 5.2 | 4.5 | 688 |
| Assistenza | 10.1 | 4.9 | 9.7 | 8.2 | 1,783 |
| Assistenza sociale generale | 0.0 | 0.0 | 0.0 | 0.0 | 1 |
| Ciclo integrato dell'acqua | 3.5 | 2.1 | 4.4 | 3.3 | 718 |
| Cultura e servizi turistici | 5.0 | 2.7 | 6.2 | 4.6 | 666 |
| Difesa, Giustizia, Sicurezza Pubblica | 0.2 | 0.1 | 0.1 | 0.1 | 12 |
| Educazione alta e universitaria | 0.3 | 0.0 | 0.3 | 0.2 | 48 |
| Energie | 0.4 | 1.1 | 0.4 | 0.6 | 133 |
| Formazione | 10.4 | 20.7 | 12.5 | 17.4 | 3,709 |
| Industria e Servizi | 14.0 | 23.9 | 14.2 | 17.4 | 3,773 |
| Interventi in campo sociale | 0.1 | 0.1 | 0.5 | 0.2 | 49 |
| Infrastrutture | 1.5 | 1.6 | 1.6 | 1.6 | 384 |
| Interno | 20.2 | 22.6 | 17.4 | 21.2 | 4,691 |
| Ricerca e sviluppo | 3.9 | 1.9 | 1.5 | 2.5 | 540 |
| Rischi | 0.6 | 0.2 | 2.1 | 1.2 | 262 |
| Sanità | 0.9 | 0.3 | 2.2 | 1.1 | 229 |
| Teléfono comunicazioni | 2.0 | 1.2 | 2.2 | 1.8 | 382 |
| Turismo | 3.0 | 5.1 | 4.1 | 4.1 | 883 |
| Urban | 4.1 | 3.8 | 4.0 | 4.0 | 868 |
| Urbanità | 3.9 | 4.4 | 10.5 | 6.1 | 1,322 |
| Totale azioni | 100.0 | 100.0 | 100.0 | 100.0 | 21,769 |
| Per area | 7,278 | 7,304 | 6,627 | 21,769 | |



An interactive tool to explore data

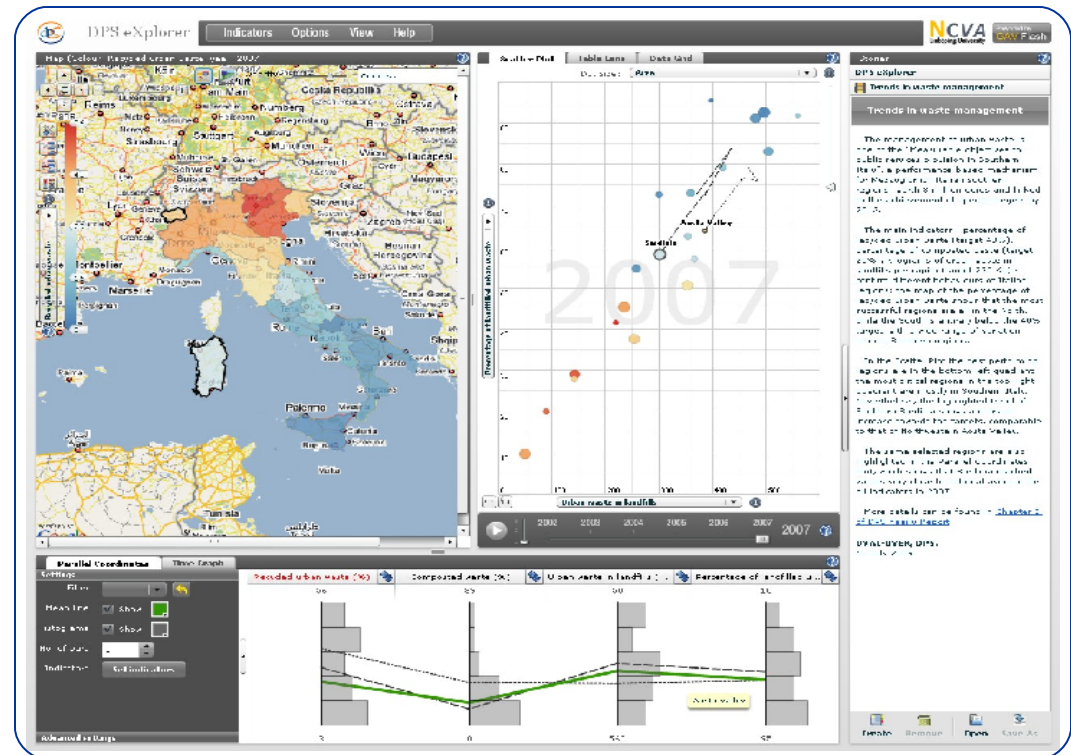
DPS eXplorer

Makes it possible to analyze and compare the performance of local administrations on the themes linked to the incentive mechanism

Among its main features:

- interactive exploration of multiple indicators
- time animation
- stories: users can contribute with their own narratives and analyses
- integration with user data

Available from today at:
www.dps.tesoro.it/DPSexPlorer



Regional Public Accounts (CPT)



CPT eXplorer



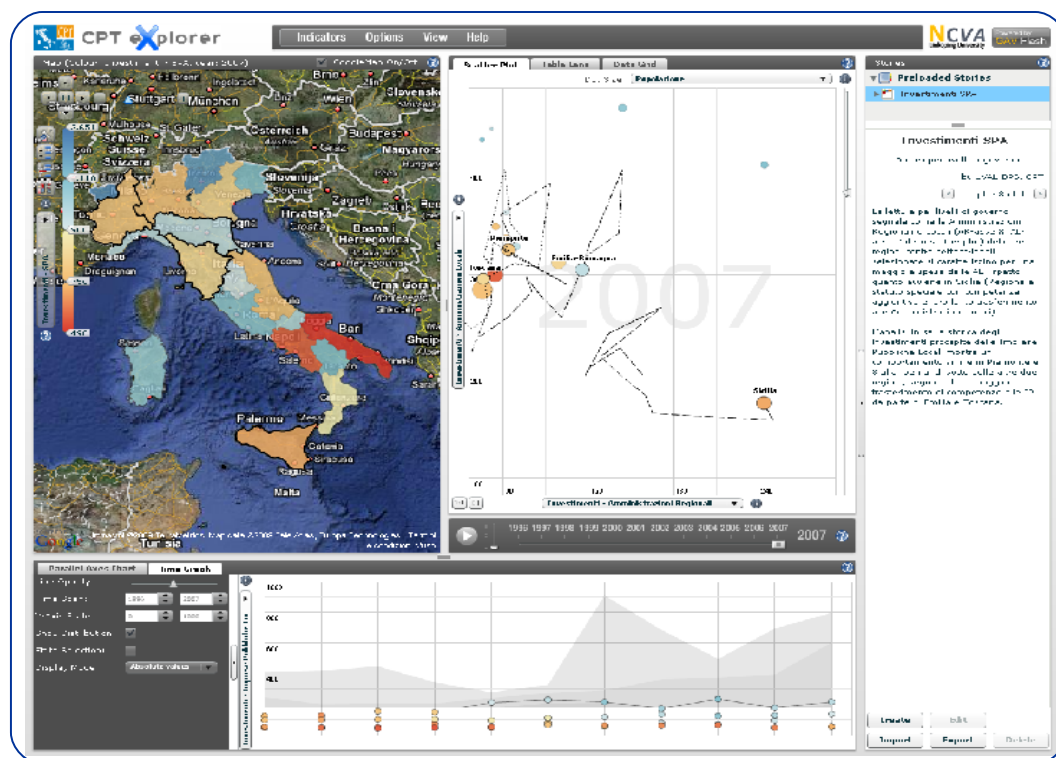
www.dps.tesoro.it/cpt

It adds to other methods of access to online data:

- static tree-view
- dynamic tree-view
- direct access to database

Analyses available in volumes of
Regional Monographs

Soon available at:
www.dps.tesoro.it/cpt/CPTeXplorer





1. Compare, organize, reflect on data
2. Understand relationships among information
3. Share suggestion, indications, considerations on data and indicators
→ use the “story teller” to save and share a specific data time animation

“Call for stories” targeted at Analysts and researchers, Regional and Local Administrations, Project promoters, NGOs on crucial themes for regional policy and/or public financial aspects

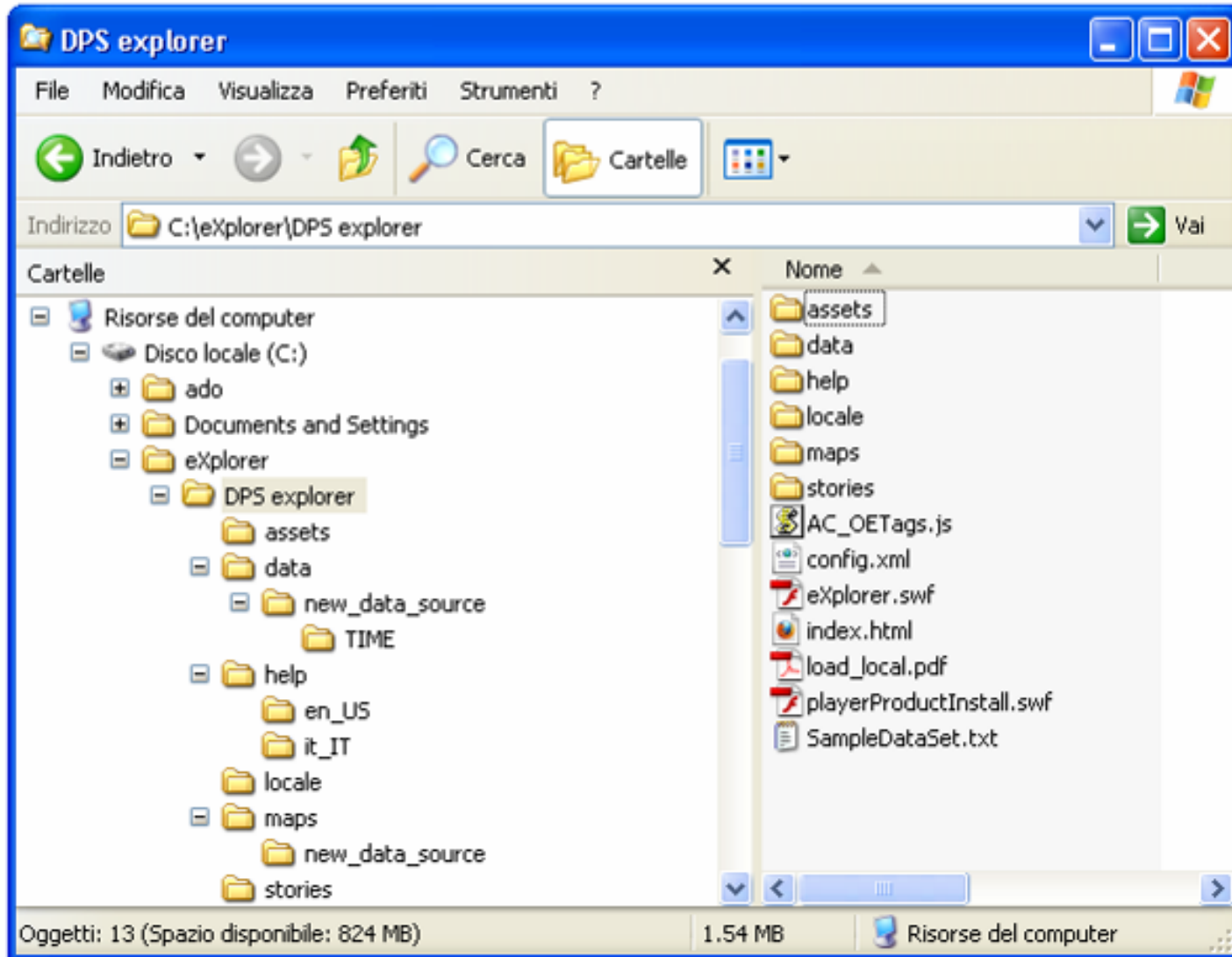
Improve yourselves in telling a story with statistics!

Send your stories to:

dps.explorer@tesoro.it



- ✿ Project developed within the framework of OECD Global Project on *“Measuring the progress of societies”*
- ✿ First bilingual implementation → switch Italian/English
- ✿ Close collaboration with NCVA → continuous feedback on functionalities, features and versatility → eXplorer upgrade and more open configuration system
- ✿ Selection of data and indicators to load into eXplorer
 - ✿ DPS eXplorer approx. 100 indicators from DPS-ISTAT database
 - ✿ CPT eXplorer approx. 80 indicators from CPT database
- ✿ Implementation of SAS code for automating creation of .txt file in eXplorer format
- ✿ Editing of an updated and revised guide, tailored to the Italian context
- ✿ Drafting of first stories on:
 - ✿ some themes of “Obiettivi di Servizio”
 - ✿ some aspects of public finance





Initial config.xml

```
<config>
  <dataSources>
    <source>
      <identifier>datasource</identifier>
      <name>Data Source</name>
      <mapsLocation>maps/datasource</mapsLocation>
      <maps>
        <map projection="mercator" enableGoogleMap="false">italy_tl2_reprojected_bg</map>
      </maps>
      <dbfIdField>CODE</dbfIdField>
      <timeDataLocation>data/datasource/TIME</timeDataLocation>
      <dataLocation>data/datasource/TL2</dataLocation>
    </source>
  </dataSources>
  <stories>
    <story>stories/default.xml</story>
  </stories>
  <header>
    <title>Italy DPS</title>
    <logo href="http://" src="config/italian_flag.png" />
  </header>
</config>
```



Updated config.xml (1/2)

From:

```
<maps>
  <map projection="mercator" enableGoogleMap="false">italy_t12_reprojected_bg</map>
</maps>
<dbfIdField>CODE</dbfIdField>
```

To:

```
<maps>
  <map enableGoogleMap="true" projection="mercator">
    <layer>
      <filename>italy_t12_reprojected</filename>
      <type>main</type>
      <dbfIdField>CODE</dbfIdField>
      <dbfNameField>NAME</dbfNameField>
      <dbfGroupIdField>None</dbfGroupIdField>
      <dbfGroupNameField>None</dbfGroupNameField>
    </layer>
  </map>
</maps>
```




Updated config.xml (2/2)

From:

```
<header>
  <title>Italy DPS</title>
  <logo href="http://" src="config/italian_flag.png"/>
</header>
```

To:

```
<header>
  <title/>
  <logo href="http://www.dps.tesoro.it/" src="assets/logoDPSeXplorer.png"/>
  <docURL>http://www.dps.tesoro.it/DPSeXplorer/GuidaDPSeXplorer.pdf</docURL>
</header>
<about><![CDATA[
  Applicazione web sviluppata da <a href="http://ncva.itn.liu.se"><u>NCVA,
]]>
</about>
<layout>
  <mode>0</mode>
</layout>
<localizations>
  <locale name="Italiano">it_IT</locale>
  <locale name="English">en_US</locale>
</localizations>
<googleMapKey>ABQIAAAAPCP04tuLrthPLBfjyiwL9RThxjvghmJFSBJNVnctqNC-m8RGRSEAXH3I
```



From:

Microsoft Excel - asse1.xls

File Modifica Visualizza Inserisci Formato Strumenti Dati Finestra ?

Digitare una domanda.

Tahoma 8 G C S

A1

| | B | C | D | E | F | G | H | I | J | K | L | M | N | O | P | Q | R | S |
|----|-----------------------------------|---|------------|------------|------------|------------|------------|------------|------------|------------|------------|------------|------------|------------|------|---|---|---|
| 1 | Asse I - Risorse naturali. | | | | | | | | | | | | | | | | | |
| 2 | | | | | | | | | | | | | | | | | | |
| 3 | Ind. I-02 | Coste non balneabili per inquinamento (a) | | | | | | | | | | | | | | | | |
| 4 | | Km di coste non balneabili per inquinamento su km di coste totali (%) | | | | | | | | | | | | | | | | |
| 5 | | | | | | | | | | | | | | | | | | |
| 6 | Regioni, ripartizioni geografiche | Anni | | | | | | | | | | | | | | | | |
| 7 | | 1995 | 1996 | 1997 | 1998 | 1999 | 2000 | 2001 | 2002 | 2003 | 2004 | 2005 | 2006 | 2007 | 2008 | | | |
| 8 | Piemonte | | | | | | | | | | | | | | | | | |
| 9 | Valle d'Aosta/Vallee d'Aoste | | | | | | | | | | | | | | | | | |
| 10 | Lombardia | | | | | | | | | | | | | | | | | |
| 11 | Trentino-Alto Adige | | | | | | | | | | | | | | | | | |
| 12 | - Bolzano/Bozen | | | | | | | | | | | | | | | | | |
| 13 | - Trento | | | | | | | | | | | | | | | | | |
| 14 | Veneto | 4.7 | 1.5 | 5.1 | 1.7 | 3.5 | 1.4 | 2.1 | 8.1 | 2.6 | 4.4 | 3.4 | 7.0 | 3.4 | | | | |
| 15 | Friuli-Venezia Giulia | 4.6 | 3.0 | 0.0 | 0.0 | 0.0 | 0.0 | 0.0 | 0.0 | 0.0 | 0.4 | 0.0 | 0.0 | 3.0 | | | | |
| 16 | Liguria | 3.2 | 2.5 | 1.7 | 3.9 | 3.1 | 2.4 | 3.4 | 3.3 | 2.5 | 2.5 | 2.5 | 2.0 | 2.8 | | | | |
| 17 | Emilia-Romagna | 2.3 | 2.2 | 17.8 | 2.3 | 2.3 | 2.1 | 2.3 | 6.6 | 2.3 | 2.2 | 2.1 | 2.1 | 2.4 | | | | |
| 18 | Toscana | 2.9 | 2.0 | 2.7 | 2.0 | 2.2 | 2.0 | 1.9 | 2.0 | 1.3 | 1.3 | 1.1 | 1.3 | 1.2 | | | | |
| 19 | Umbria | | | | | | | | | | | | | | | | | |
| 20 | Marche | 9.2 | 6.2 | 8.4 | 6.8 | 6.6 | 6.1 | 6.1 | 5.8 | 6.0 | 6.0 | 5.8 | 6.3 | 5.8 | | | | |
| 21 | Lazio | 22.4 | 17.1 | 17.8 | 19.2 | 12.0 | 10.9 | 10.0 | 11.5 | 12.5 | 12.0 | 13.4 | 18.3 | 12.8 | | | | |
| 22 | Abruzzo | 6.9 | 5.4 | 6.0 | 6.5 | 7.2 | 8.3 | 5.8 | 6.4 | 7.9 | 7.6 | 7.3 | 7.6 | 7.5 | | | | |
| 23 | Molise | 1.7 | 1.7 | 2.0 | 2.0 | 2.5 | 5.6 | 2.0 | 4.2 | 2.0 | 2.0 | 5.6 | 2.0 | 2.0 | | | | |
| 24 | Campania | 31.5 | 21.4 | 18.6 | 19.0 | 19.0 | 19.7 | 17.9 | 18.5 | 17.4 | 19.8 | 17.8 | 18.5 | 17.5 | | | | |
| 25 | Puglia | 5.7 | 5.5 | 5.8 | 5.8 | 5.7 | 5.4 | 7.1 | 5.8 | 5.6 | 5.7 | 5.9 | 6.4 | 6.2 | | | | |
| 26 | Basilicata | 2.7 | 4.2 | 7.4 | 3.9 | 3.9 | 3.9 | 2.6 | 2.6 | 2.6 | 3.9 | 2.6 | 2.6 | 2.6 | | | | |
| 27 | Calabria | 4.2 | 5.9 | 7.0 | 7.4 | 5.9 | 6.1 | 5.0 | 6.9 | 7.2 | 8.3 | 7.9 | 9.4 | 10.3 | | | | |
| 28 | Sicilia | 10.4 | 7.5 | 4.7 | 4.6 | 4.9 | 4.5 | 4.8 | 5.0 | 4.7 | 5.0 | 4.8 | 5.3 | 4.7 | | | | |
| 29 | Sardegna | 4.3 | 4.2 | 3.8 | 3.7 | 3.6 | 3.6 | 3.6 | 3.6 | 3.7 | 3.7 | 3.6 | 3.6 | 3.7 | | | | |
| 30 | Italia | 8.3 | 6.6 | 6.4 | 6.1 | 5.6 | 5.5 | 5.4 | 5.8 | 5.5 | 5.9 | 5.7 | 6.4 | 6.0 | | | | |
| 31 | - Nord | 3.6 | 2.3 | 5.0 | 2.6 | 2.6 | 1.8 | 2.4 | 4.4 | 2.1 | 2.5 | 2.3 | 2.8 | 2.9 | | | | |
| 32 | - Nord-ovest | 3.2 | 2.5 | 1.7 | 3.9 | 3.1 | 2.4 | 3.4 | 3.3 | 2.5 | 2.5 | 2.5 | 2.0 | 2.8 | | | | |
| 33 | - Nord-est | 3.9 | 2.2 | 7.8 | 1.4 | 2.1 | 1.2 | 1.6 | 5.4 | 1.8 | 2.6 | 2.0 | 3.5 | 3.0 | | | | |
| 34 | - Centro | 10.2 | 7.6 | 8.5 | 8.2 | 6.0 | 5.5 | 5.1 | 5.6 | 5.6 | 5.4 | 5.7 | 7.5 | 5.6 | | | | |
| 35 | - Centro-Nord | 7.5 | 5.5 | 7.1 | 6.0 | 4.7 | 4.0 | 4.0 | 5.1 | 4.2 | 4.3 | 4.4 | 5.6 | 4.5 | | | | |
| 36 | - Mezzogiorno | 8.6 | 7.0 | 6.2 | 6.1 | 6.0 | 5.9 | 6.1 | 5.9 | 6.4 | 6.2 | 6.6 | 6.5 | | | | | |
| 37 | - Sud | 10.5 | 8.0 | 8.8 | 9.0 | 8.5 | 8.7 | 8.4 | 8.7 | 8.5 | 8.4 | 8.0 | 8.8 | 8.7 | | | | |

INDICE INDICATORI / I-01 / I-02 / I-03 / I-03 bis / I-03 quater / I-03 ter / I-04 / I-04 ter / I-05 / I-05 bis / I-06

Disegno Forme



To:

Microsoft Excel - ENER_it.txt

File Modifica Visualizza Inserisci Formato Strumenti Dati Finestra ?

Digitare una domanda.

Rispondi con modifiche... Termina revisione...

Arial 10 G C S

| | A | B | P | Q | R | S | T | U | V | W | X | Y | Z | AA | AB | AC | AD |
|----|-------------|-------------|--------------------------------------|--------------------------------------|--------------------------------------|--------------------------------------|--------------------------------------|--------------------------------------|--------------------------------------|--------------------------------------|--------------------------------------|--------------------------------------|--------------------------------------|--------------------------------------|--------------------------------------|--------------------------------------|------------------------------------|
| 1 | META | CODE | Coste non balneabili per | Coste non balneabili per | Coste non balneabili per | Coste non balneabili per | Coste non balneabili per | Coste non balneabili per | Coste non balneabili per | Coste non balneabili per | Coste non balneabili per | Coste non balneabili per | Coste non balneabili per | Coste non balneabili per | Coste non balneabili per | Coste non balneabili per | Disponibilità di risorse |
| 2 | ID | regID | I-02 | I-02 | I-02 | I-02 | I-02 | I-02 | I-02 | I-02 | I-02 | I-02 | I-02 | I-02 | I-02 | I-02 | I-03 |
| 3 | DESCRIPTION | Regional ID | Lunghezza delle coste non balneabili | Lunghezza delle coste non balneabili | Lunghezza delle coste non balneabili | Lunghezza delle coste non balneabili | Lunghezza delle coste non balneabili | Lunghezza delle coste non balneabili | Lunghezza delle coste non balneabili | Lunghezza delle coste non balneabili | Lunghezza delle coste non balneabili | Lunghezza delle coste non balneabili | Lunghezza delle coste non balneabili | Lunghezza delle coste non balneabili | Lunghezza delle coste non balneabili | Lunghezza delle coste non balneabili | Percentuale di acqua potabilizzata |
| 4 | UNIT | NA | % | % | % | % | % | % | % | % | % | % | % | % | % | % | % |
| 5 | PARSETYPE | S | F | F | F | F | F | F | F | F | F | F | F | F | F | F | F |
| 6 | SHEET | NA | 1995 | 1996 | 1997 | 1998 | 1999 | 2000 | 2001 | 2002 | 2003 | 2004 | 2005 | 2006 | 2007 | 2008 | 1999 |
| 7 | PRECISION | NA | | | | | | | | | | | | | | | |
| 8 | | ITC1 | | | | | | | | | | | | | | | 31.23147 |
| 9 | | ITC2 | | | | | | | | | | | | | | | 7.447368 |
| 10 | | ITC3 | 3.2099479 | 2.5448236 | 1.735107 | 3.8935013 | 3.1491555 | 2.4334383 | 3.3781849 | 3.3209276 | 2.5193244 | 2.4906957 | 2.547953 | 2.0314735 | 2.8040057 | 2.4034335 | 40.00182 |
| 11 | | ITC4 | | | | | | | | | | | | | | | 35.14642 |
| 12 | | ITD1 | | | | | | | | | | | | | | | 17.975 |
| 13 | | ITD2 | | | | | | | | | | | | | | | 6.143089 |
| 14 | | ITD3 | 4.734485 | 1.5355086 | 5.1183621 | 1.6991819 | 3.5242291 | 1.4474512 | 2.1397105 | 8.1183134 | 2.5802391 | 4.4052863 | 3.3983638 | 7.0484581 | 3.3983638 | 8.6847074 | 18.42537 |
| 15 | | ITD4 | 4.5537341 | 3.0054645 | 0 | 0 | 0 | 0 | 0 | 0 | 0 | 0.4476276 | 0 | 0 | 2.954342 | 1.2533572 | 30.42723 |
| 16 | | ITD5 | 2.3166023 | 2.2393822 | 17.760618 | 2.2883295 | 2.2900763 | 2.0610687 | 2.2900763 | 6.5648855 | 2.2900763 | 2.2137405 | 2.1374046 | 2.1357742 | 2.4408848 | 1.6018307 | 49.44342 |
| 17 | | ITE1 | 2.9339853 | 2.025847 | 2.6720224 | 1.9797039 | 2.2292464 | 1.9797039 | 1.8798869 | 2.0296124 | 1.2809849 | 1.3142572 | 1.1312594 | 1.3142572 | 1.2310764 | 1.0314424 | 49.71968 |
| 18 | | ITE2 | | | | | | | | | | | | | | | 12.27054 |
| 19 | | ITE3 | 9.244186 | 6.2209302 | 8.4302326 | 6.7630058 | 6.5895954 | 6.1271676 | 6.1271676 | 5.8381503 | 6.0115607 | 6.0115607 | 5.8381503 | 6.2969382 | 5.7770075 | 5.4881571 | 19.4478 |
| 20 | | ITE4 | 22.406057 | 17.106001 | 17.835109 | 19.22545 | 12.005533 | 10.926694 | 10.041494 | 11.479945 | 12.53112 | 11.950207 | 13.360996 | 18.252212 | 12.831858 | 12.859513 | 3.690725 |
| 21 | | ITF1 | 6.918745 | 5.390185 | 6.0337892 | 6.518283 | 7.154213 | 8.2670906 | 5.8028617 | 6.4387917 | 7.8696343 | 7.6311606 | 7.3131955 | 7.5516693 | 7.4721781 | 7.3926868 | 1.953412 |
| 22 | | ITF2 | 1.7492711 | 1.7492711 | 2.0408163 | 1.9774011 | 2.5423729 | 5.6497175 | 1.9774011 | 4.2372881 | 1.9774011 | 1.9774011 | 5.6497175 | 1.971831 | 1.971831 | 1.971831 | 9.530723 |
| 23 | | ITF3 | 31.483088 | 21.422376 | 18.647008 | 18.969555 | 19.033426 | 19.693421 | 17.883756 | 18.522461 | 17.415372 | 19.799872 | 17.841175 | 18.518519 | 17.475521 | 17.347808 | 2.019458 |
| 24 | | ITF4 | 5.7476804 | 5.5428365 | 5.7838294 | 5.8265896 | 5.6763006 | 5.433526 | 7.0635838 | 5.8150289 | 5.6184971 | 5.6763006 | 5.8959538 | 6.4154433 | 6.1726968 | 6.4847994 | 38.25792 |
| 25 | | ITF5 | 2.7027027 | 4.222973 | 7.4324324 | 3.8585209 | 3.8585209 | 3.8585209 | 2.5723473 | 2.5723473 | 2.5723473 | 3.8585209 | 2.5723473 | 2.5682183 | 2.5682183 | 2.5682183 | 78.78226 |
| 26 | | ITF6 | 4.2112676 | 5.9014085 | 6.9577465 | 7.3913651 | 5.8683806 | 6.1478273 | 5.0020959 | 6.888361 | 7.1817801 | 8.3275115 | 7.8803968 | 9.431326 | 10.339528 | 9.51516 | 10.895 |

Disegno Forme



Joint work DPS-ISTAT

- ✿ Within the framework of:
 - **OECD Global Project on “Measuring the progress of societies”**
 - **OECD Working Party on Territorial Indicators**
- ✿ Activation of a working group on innovative tools for geovisual analysis
- ✿ Increasing availability and timeliness of official regional and sub-regional data
- ✿ International comparisons on data and indicators

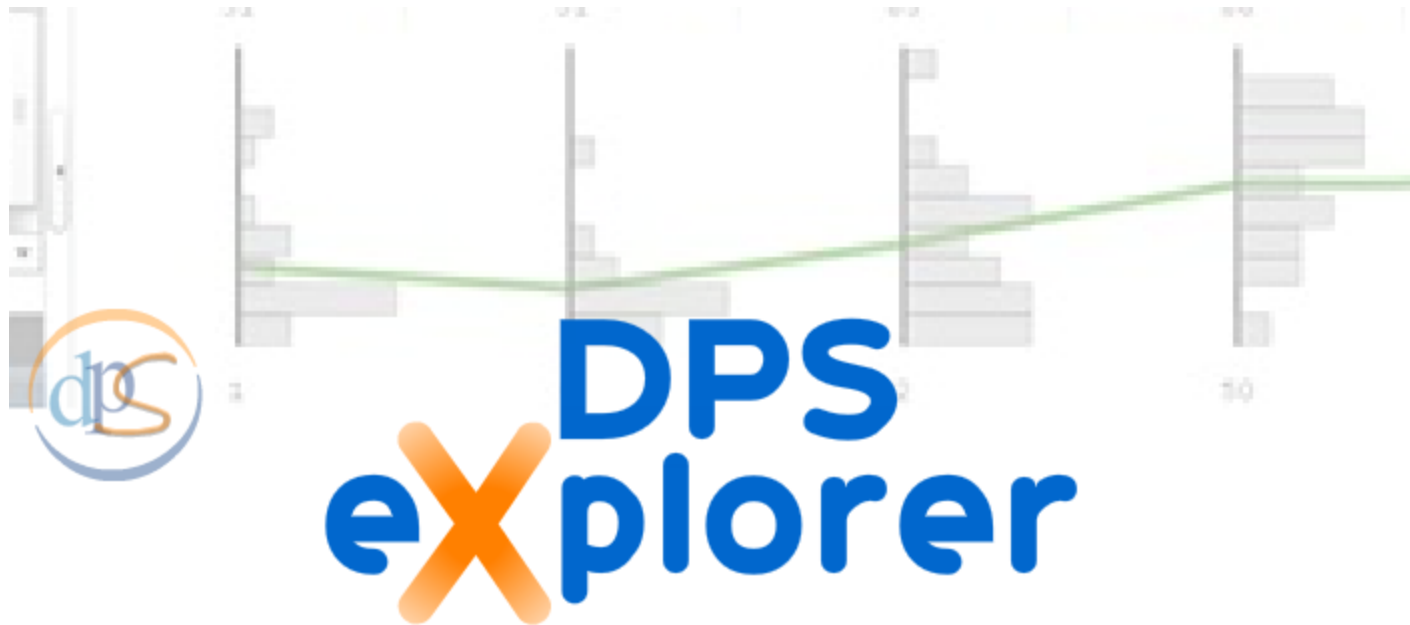


SAVE THE DATE

May, 19th 2010

Forum PA – Ministry of Economic Development booth

DPS eXplorer: dati che si animano per animare un confronto



A large circular graphic composed of two thick, curved arcs. The top arc is orange and the bottom arc is blue, forming a partial circle around the central text.

Carlo Amati – Simona De Luca
Public investments evaluation and verification unit
Department for Development and Economic Cohesion
Ministry of Economic Development
Via Sicilia 162
00187 Rome – Italy

web: www.dps.tesoro.it

email: carlo.amati@tesoro.it
simona.deluca@tesoro.it