

## Business demography

### *Years 2006 - 2011*

#### **Enterprise birth and death rates**

In 2011 there were about 265,000 business births. The birth rate is 6.7%, and, as in 2010 it is the lowest value recorded in the past six years.

Compared to 2010, a decrease in the birth rate affects only the Construction sector (the rate passes from 8.1% to 7.1%). In the Trade and Other Services the birth rate has improved slightly (passing, respectively, from 6.1 to 6.3% and from 6.9 to 7.2%).

A decline in the business birth rate (-0.1 percentage points) is recorded in the North-west, in the Centre and in the North-east, while a growth of 0.4 percentage points is registered in the South and Islands area (from 7.5 to 7.9%).

In contrast to 2010 the birth rate of businesses with employees decreases, while the birth rate of those without employees grows.

The overall business death rate decreases slightly, from 7.8% in 2010 to 7.7% in 2011. The Other Services sector shows a greater reduction (from 7.5 to 7.2%). In the Construction sector the death rate falls to a lesser extent, from 9.8 to 9.7%, while for the Manufacturing there is an increase, from 6.1% in 2010 to 6.4% in 2011.

For the fourth year in a row, the turnover net rate has a negative value (-1.0% compared to -1.1 in 2010). In detail, the Construction sector has a larger fall (from -1.7% in 2010 to -2.6% in 2011).

The Other Services sector, which recorded a negative turnover in 2010 (-0.6%), was the only one with a turnover close to zero.

In 2011, the percentage of businesses survival after one year decreases. In fact 83.1% of businesses born in the previous year is still working, while in 2010 the survival rate was 85.8%.

In the sector of Manufacturing there is a slight increase in the survival rate at one year (from 87.4% to 88.4%). This increase does not compensate the decline of survival rate in the Construction (from 81.3% to 79.9%) and especially in the Other Services sector, where it passes from 88.3% to 82.7%, a decrease of 5.6%.

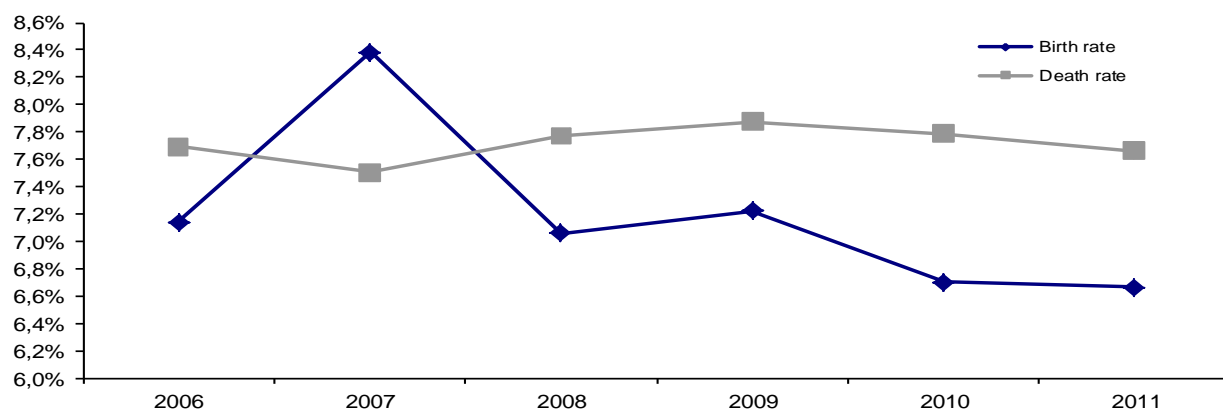
The average size of enterprises established in 2010 and still active after one year increased between 2010 and 2011, from 1.4 to 2.2 average employees.

The enterprises born in 2010 and still active in 2011 show a gain in employment rate of 28.3%.

All economic macro-sectors show a gain in employment compared to the year of birth, ranging from 21.0% of the Construction and Trade, to 59.4% of Manufacturing.

**Business birth and death rates. Years 2006-2011 (percentage values)**

---



---

*Contact person:*

ISTAT – National Institute of Statistics  
Division for Statistical Registers, Administrative data  
and statistics on Public Administration  
Via Tuscolana, 1768 – 00179 Rome, Italy

**Patrizia Cella**

ph. +39.06.4673.6227